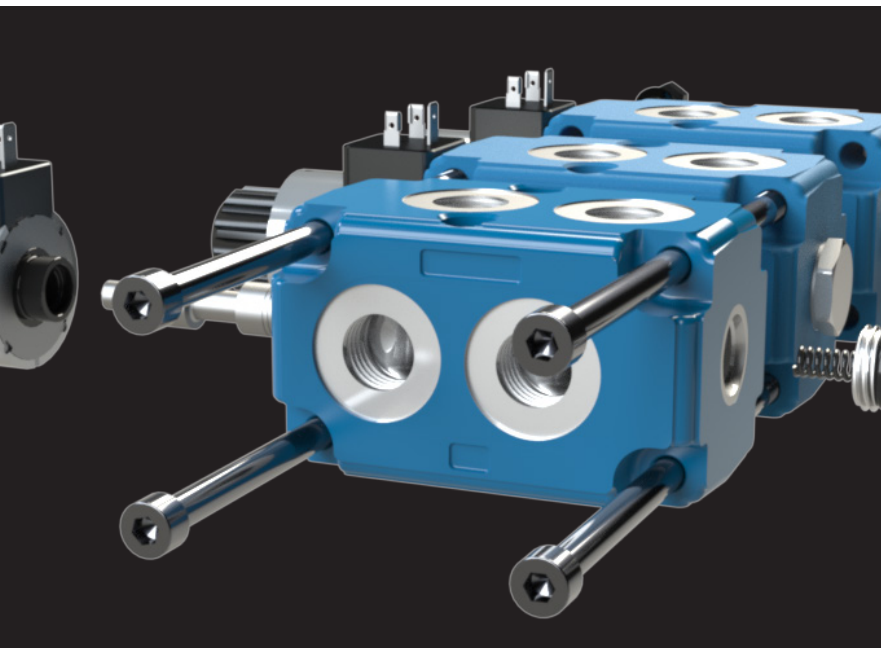


Smart design, valuable options

The next generation of motion controls



Diverter

E3I monoblock and stackable diverter valves are designed to guarantee flexibility and high level of customization. It simplifies the hydraulic circuit when two contemporary movements are not required. Compact design, easy and flexible mounting.

Diverter Product Overview

MONOBLOCK DIVERTERS

EDM

The EDM series diverters are used to connect several circuits by different spools.
Nominal flow rate from 25 to 150 l/min.

QUICK REFERENCE GUIDE

TYPE	EDM06A	EDM08A	EDM10A	EDM12A	
Number of ways	6-7*	6-7*	6-7*	6-7*	
Number of sections	1	1	1	1	
Nominal flow (l/min) - [GPM]	25 [7]	50 [14]	100 [28]	150 [42]	
Internal leakage P ₁ (P ₂) → C ₂ (C ₃) / C ₁ (C ₄) Δp = 100 bar / T = 40°C	< 25				
Operating pressure (bar) [psi]	250 [3625]				
Operating pressure by using external drain (bar) [psi]	310 [4500]				
Diverter valve stroke (mm) [in]	2,8 [0.11]	3,2 [0.13]	3,2 [0.13]	3,8 [0.15]	
Weight (Kg) [lb]	1,5 [3.3]	3,8 [8.4]	3,8 [8.4]	5,8 [12.8]	
SOLENOID ACTUATION	EDM06A	EDM08A	EDM10A	EDM12A	
Solenoid 12 VDC	•	•	•	•	
Solenoid 24 VDC	•	•	•	•	
Note: different type of coil connectors are available					
SPOOL ACTUATION	EDM06A	EDM08A	EDM10A	EDM12A	
Without drain	•	•	•	•	
With drain	•	•	•	•	
PORT SIZE (BSP) - [SAE]	THREAD CLASSIFICATION	EDM06A	EDM08A	EDM10A	EDM12A
Inlet port (P1 - P2) Service port (C1 - C4) Service port (C2 - C3)	BSP - ISO 1179-1	G 1/4	G 3/8	G 1/2	G 3/4
	UN/UNF ISO 11926-1	9/16-18 UNF (SAE6)	3/4-16 UNF (SAE8)	7/8-14 UNF (SAE10)	1"1/16-12 UNF (SAE12)
	BSP - ISO 228 d		G 3/8 JIS B 2351	G 1/2 JIS B 2351	
Drain port (D)	BSP - ISO 1179-1	G 1/4			
	UN/UNF ISO 11926-1	7/16-20 UN (SAE4)			

(*) = every diverter valve is available with 7 ways by a special spool and a special plug.

APPLICATIONS

EBI diverters are maintenance free and have a long life cycle and are suited for specialized applications for a variety of mobile equipments such as:



Backhoe loaders



Telehandler machines



Agricultural machinery



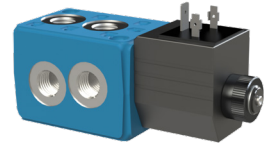
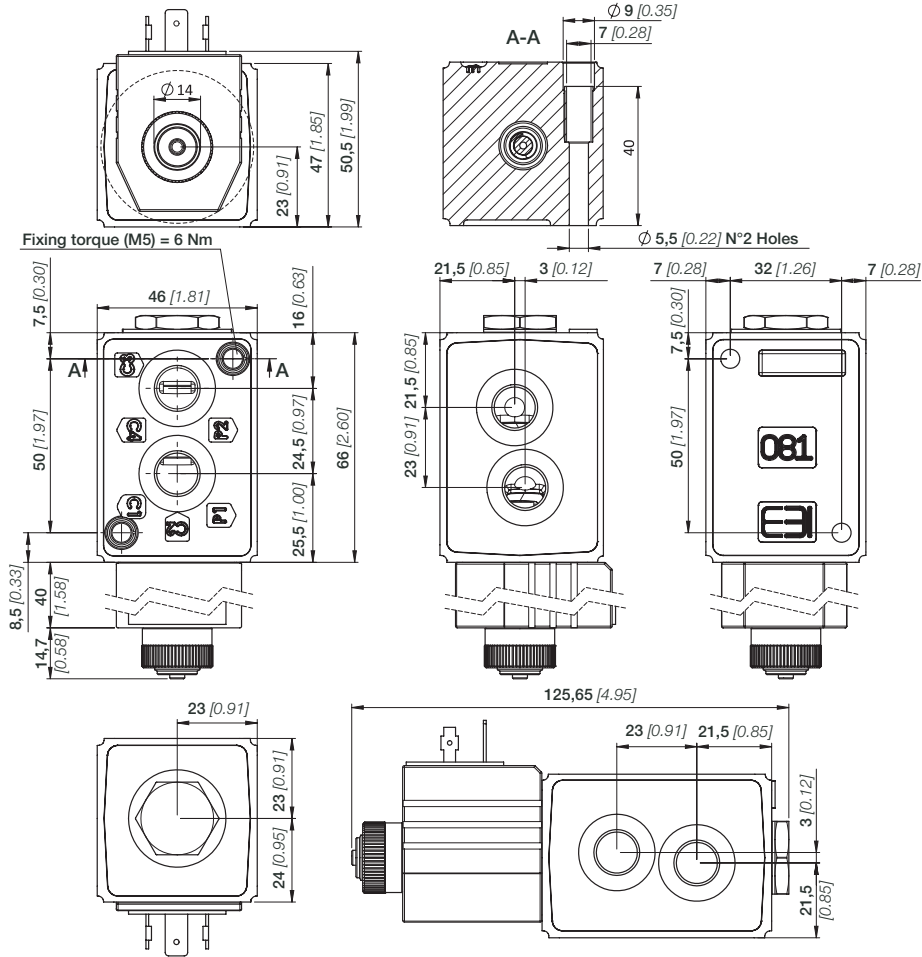
Excavator machines

MONOBLOCK DIVERTERS

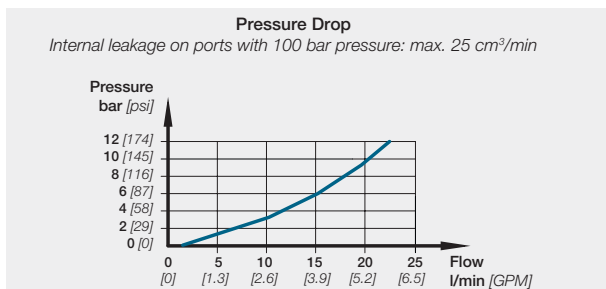
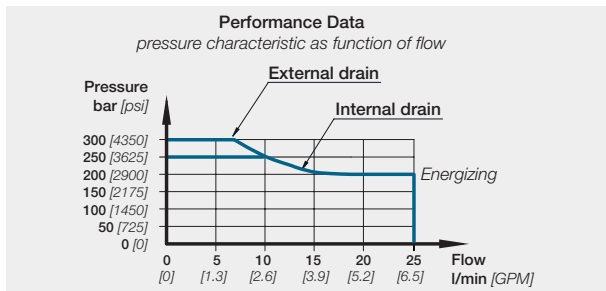
EDM06A

DIMENSIONAL DRAWING

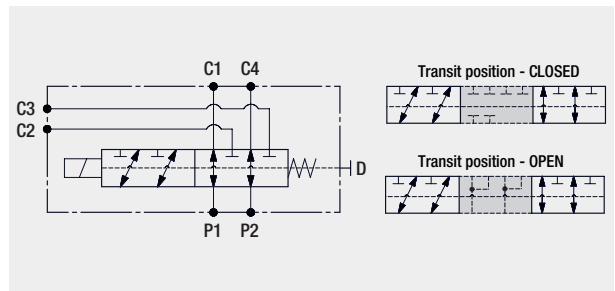
This drawing represents a EDM06A with DIN 43650 ISO 4400 Solenoid kit, internal drain circuit with BSP connections.



TYPICAL CURVES



HYDRAULIC SCHEMA

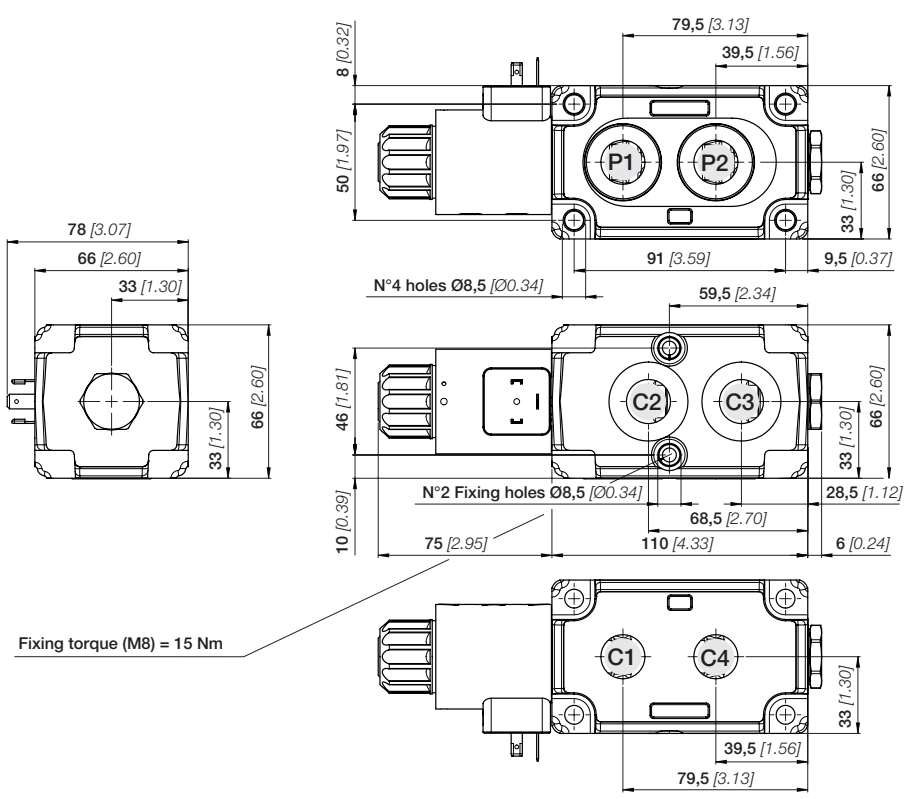


MONOBLOCK DIVERTERS

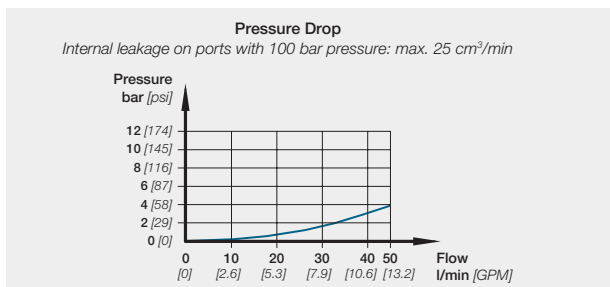
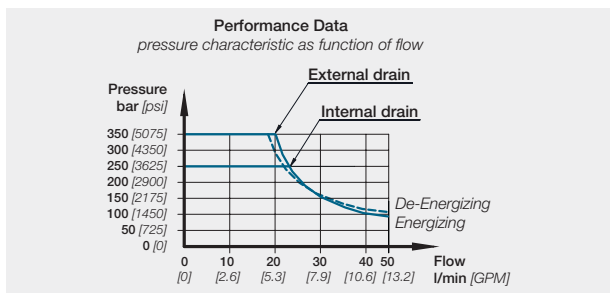
EDM08A

DIMENSIONAL DRAWING

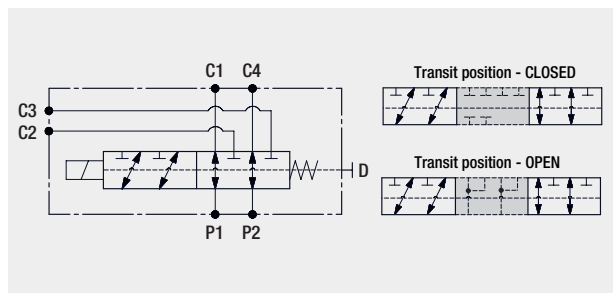
This drawing represents a EDM08A with DIN 43650 ISO 4400 Solenoid kit, internal drain circuit with BSP connections.



TYPICAL CURVES



HYDRAULIC SCHEMA

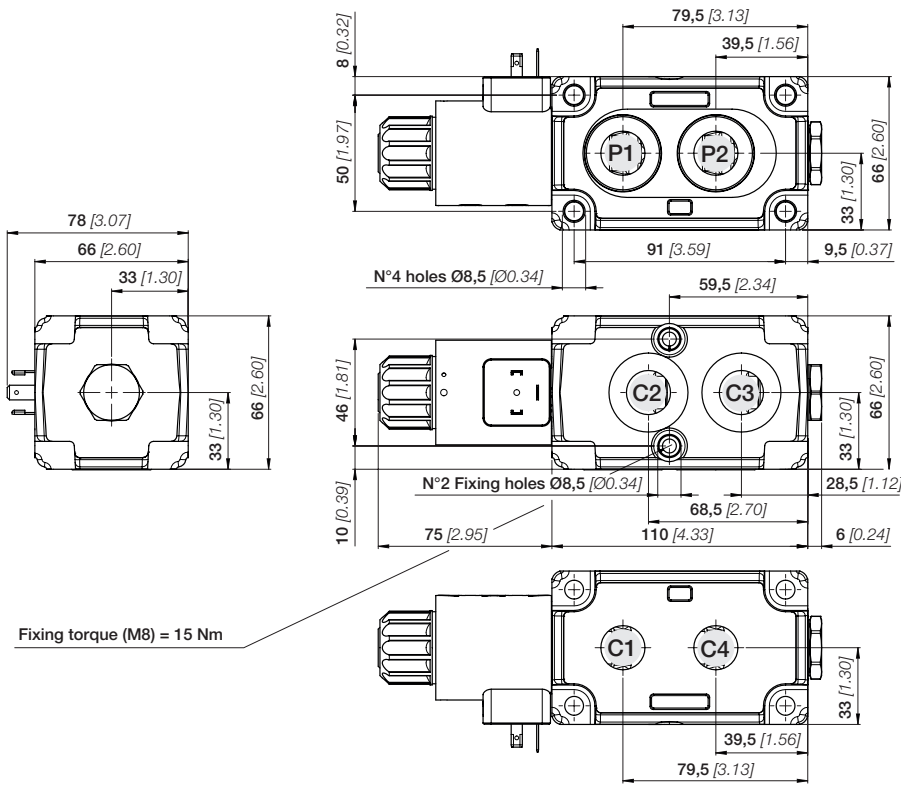


MONOBLOCK DIVERTERS

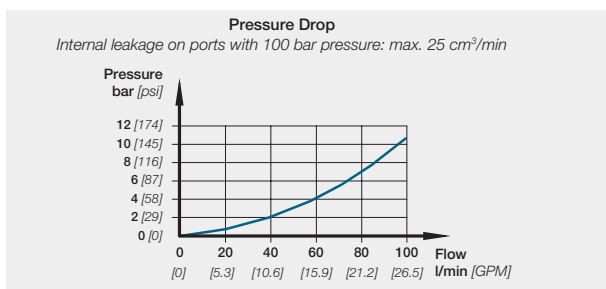
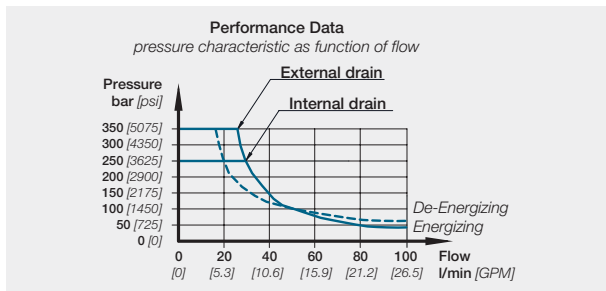
EDM10A

DIMENSIONAL DRAWING

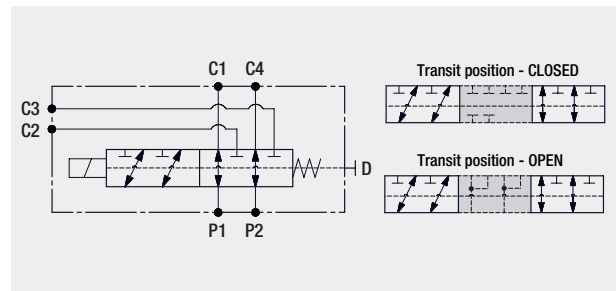
This drawing represents a EDM10A with DIN 43650 ISO 4400 Solenoid kit, internal drain circuit with BSP connections.



TYPICAL CURVES



HYDRAULIC SCHEMA



STACKABLE DIVERTERS EDS

The EDS series diverters are used to connect several circuits by different spools.
It is possible to stack up to 4 sections. Nominal flow rate from 25 to 150 l/min

QUICK REFERENCE GUIDE

TYPE	EDS06A	EDS08A	EDS10A	EDS12A	
Number of ways	6-7*	6-7*	6-7*	6-7*	
Number of sections	2 up 4	2 up 4	2 up 4	2 up 4	
Nominal flow (l/min) - [GPM]	25 [7]	50 [14]	100 [28]	150 [42]	
Internal leakage $P_1(P_2) \rightarrow C_2(C_3) / C_1(C_4) \Delta p = 100 \text{ bar} / T = 40^\circ\text{C}$	< 25				
Operating pressure (bar) [psi]	250 [3625]				
Operating pressure with external drain (bar) [psi]	310 [4500]				
Diverter valve stroke (mm) [in]	2,8 [0.11]	3,2 [0.13]	3,2 [0.13]	3,8 [0.15]	
Weight (Kg) [lb] - (Each valve)	1,5 [3.3]	3,8 [8.4]	3,8 [8.4]	5,8 [12.8]	
SOLENOID ACTUATION	EDS06A	EDS08A	EDS10A	EDS12A	
Solenoid 12 VDC	•	•	•	•	
Solenoid 24 VDC	•	•	•	•	
Note: different type of coil connectors are available					
SPOOL ACTUATION	EDS06A	EDS08A	EDS10A	EDS12A	
Without drain	•	•	•	•	
With drain	•	•	•	•	
PORT SIZE (BSP) - [SAE]	THREAD CLASSIFICATION	EDS06A	EDS08A	EDS10A	EDS12A
Inlet port (P1 - P2) Service port (C1 - C4) Service port (C2 - C3)	BSP - ISO 1179-1	G 1/4	G 3/8	G 1/2	G 3/4
	UN/UNF ISO 11926-1	9/16-18 UNF (SAE6)	3/4-16 UNF (SAE8)	7/8-14 UNF (SAE10)	1"1/16-12 UNF (SAE12)
	BSP - ISO 228 d		G 3/8 JIS B 2351	G 1/2 JIS B 2351	
Drain port (D)	BSP - ISO 1179-1	G 1/4			
	UN/UNF ISO 11926-1	7/16-20 UN (SAE4)			

(*) = every diverter valve is available with 7 ways by a special spool and a special plug.

APPLICATIONS

EBI diverters are maintenance free and have a long life cycle and are suited for specialized applications for a variety of mobile equipments such as:



Backhoe loaders



Telehandler machines



Agricultural machinery

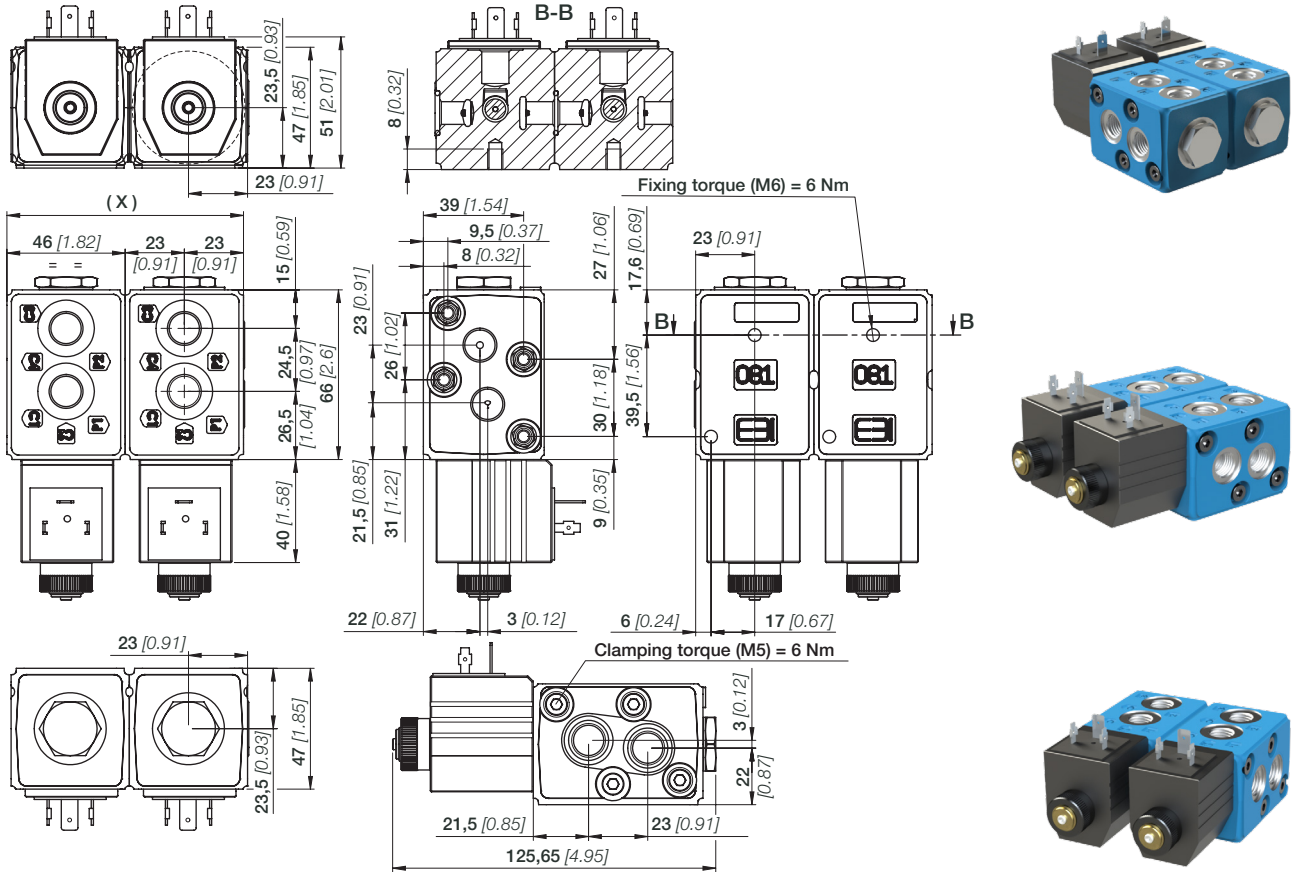


Excavator machines

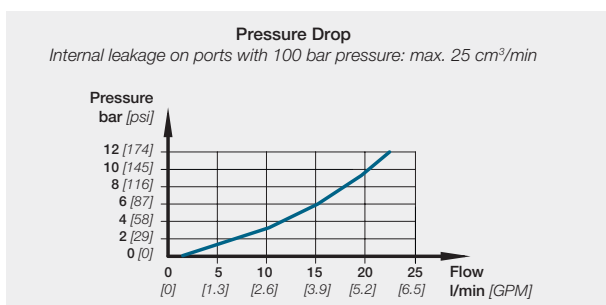
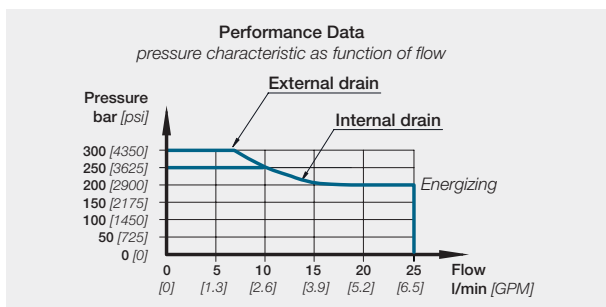
STACKABLE DIVERTERS EDS06A

DIMENSIONAL DRAWING

This drawing represents a EDS06A with DIN 43650 ISO 4400 Solenoid kit, internal drain circuit with BSP connections.



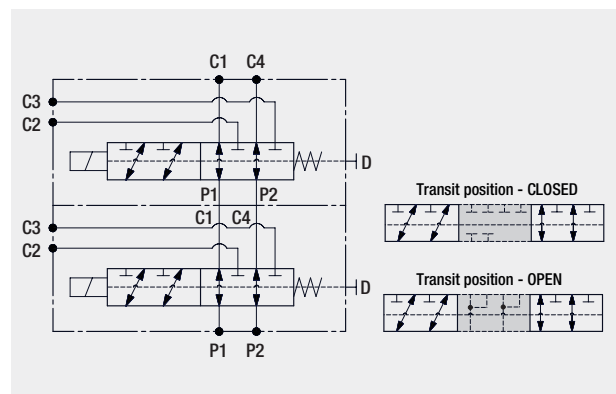
TYPICAL CURVES



TECHNICAL SPECIFICATIONS

TYPE	DIMENSION (X) mm - [in]	WEIGHT kg - [lb]
EDS06A/2	92 - [3.64]	3 - [6.6]
EDS06A/3	138 - [5.46]	4.5 - [9.9]
EDS06A/4	184 - [7.28]	6 - [13.2]

HYDRAULIC SCHEMA

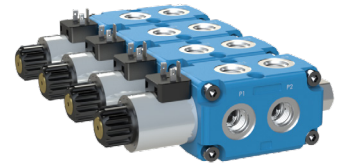
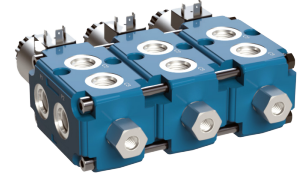
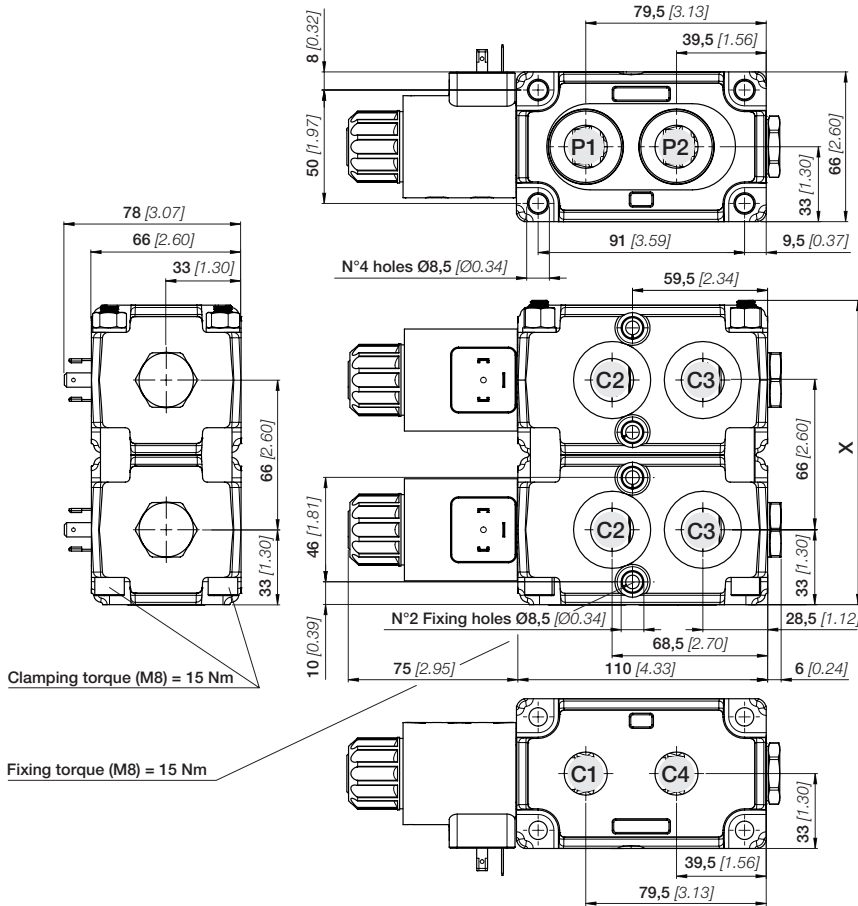


STACKABLE DIVERTERS

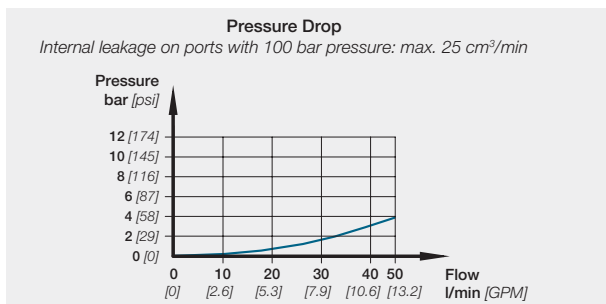
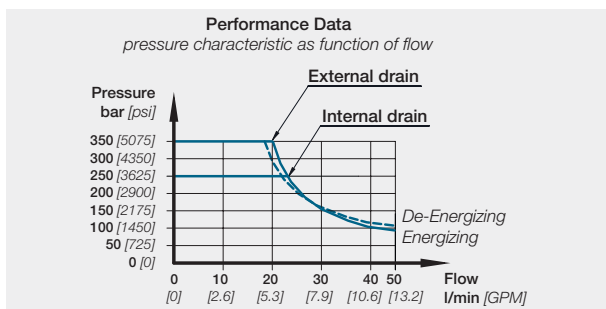
EDS08A

DIMENSIONAL DRAWING

This drawing represents a EDS08A with DIN 43650 ISO 4400 Solenoid kit, internal drain circuit with BSP connections.



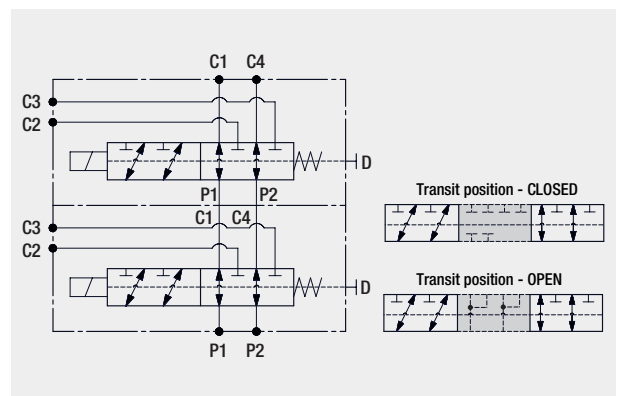
TYPICAL CURVES



TECHNICAL SPECIFICATIONS

TYPE	DIMENSION (X) mm - [in]	WEIGHT kg - [lb]
EDS08A/2	136 - [5.36]	6,8 - [15]
EDS08A/3	202 - [7.96]	10,3 - [22.7]
EDS08A/4	268 - [10.56]	13,7 - [30.1]

HYDRAULIC SCHEMA

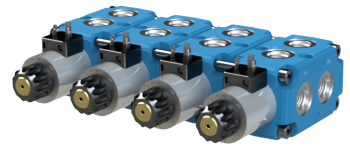
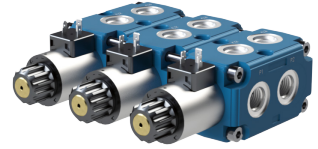
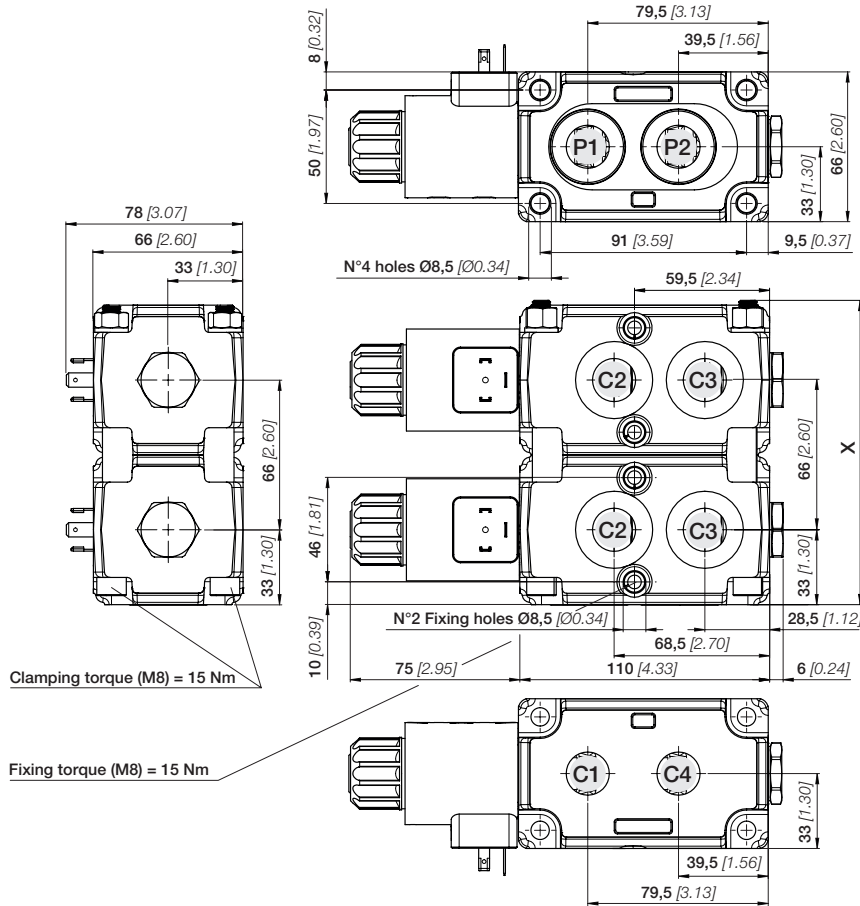


STACKABLE DIVERTERS

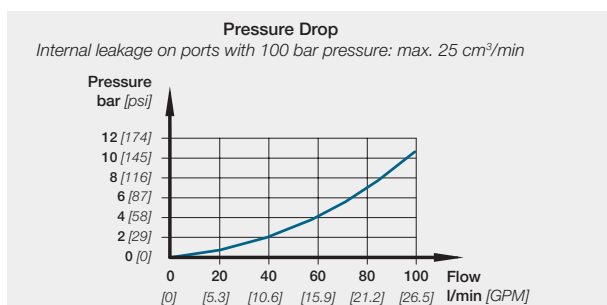
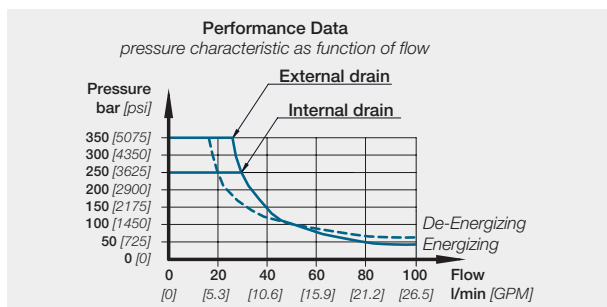
EDS10A

DIMENSIONAL DRAWING

This drawing represents a EDS10A with DIN 43650 ISO 4400 Solenoid kit, internal drain circuit with BSP connections.



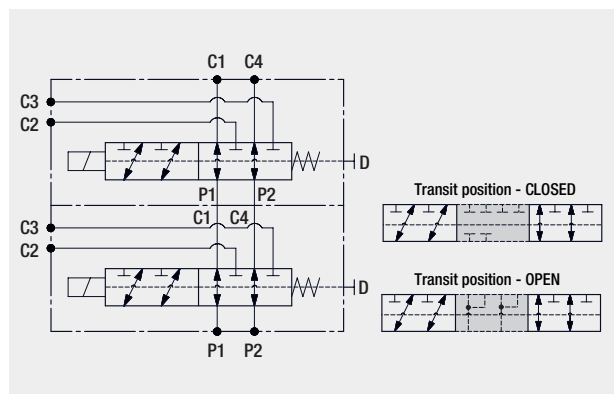
TYPICAL CURVES



TECHNICAL SPECIFICATIONS

TYPE	DIMENSION (X) mm - [in]	WEIGHT kg - [lb]
EDS10A/2	136 - [5.36]	6,8 - [15]
EDS10A/3	202 - [7.96]	10,3 - [22.7]
EDS10A/4	268 - [10.56]	13,7 - [30.1]

HYDRAULIC SCHEMA



MONOBLOCK DIVERTERS WITH HYDRAULIC ACTUATION

EDM61A-EDM62A

The EDM61A and EDM62A diverters can double the actuations of a spool control valve and are the best solution for optimizing spaces and systems. Nominal flow rate from 300 to 400 l/min.

QUICK REFERENCE GUIDE

TYPE	EDM61A	EDM62A
Nominal flow (l/min) - [GPM]	300 [80]	400 [105]
Operating pressure (bar) [psi]	420 [6090]	
Diverter valve stroke (mm) [in]	13 [0.51]	13 [0.51]
Weight (Kg) [lb]	12,5 [27.5]	16,5 [36.3]
PORT SIZE (BSP) - [SAE]	EDM61A	EDM62A
Service Port (A - B - C - D - E - F)	1" series SAE6000 ISO 6162-1/-2	1"1/4 series SAE6000 ISO 6162-1/-2
Hydraulic port / Tank port (T)	G 1/4	

NOTE: EH operated version on demand.

APPLICATIONS

EBI diverters are maintenance free and have a long life cycle and are suited for specialized applications for a variety of mobile equipments such as:



Drilling machines

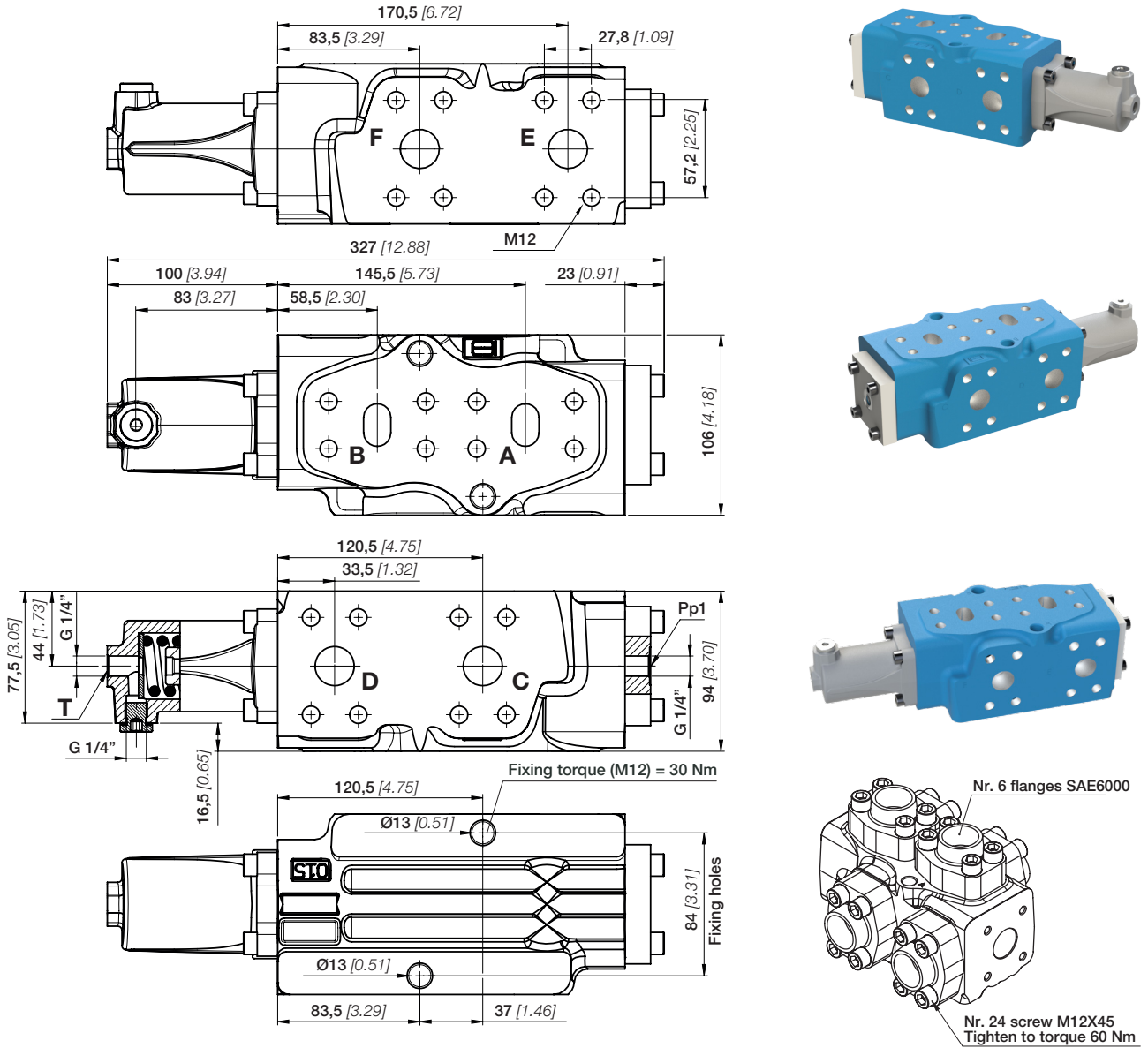


Excavator machines

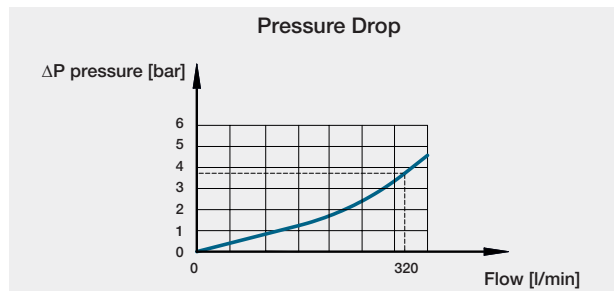
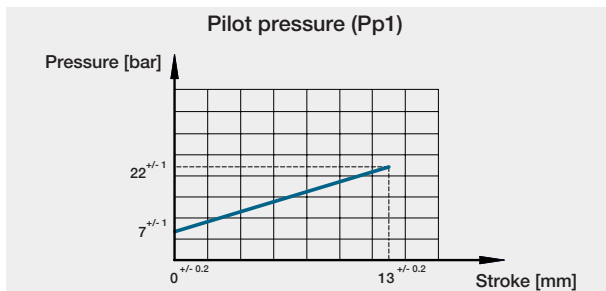
MONOBLOCK DIVERTERS WITH HYDRAULIC ACTUATION

EDM61A

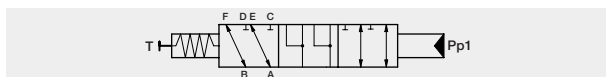
DIMENSIONAL DRAWING



TYPICAL CURVES



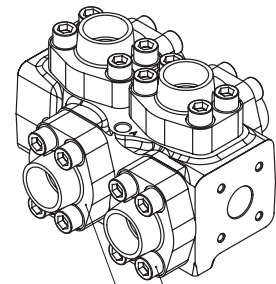
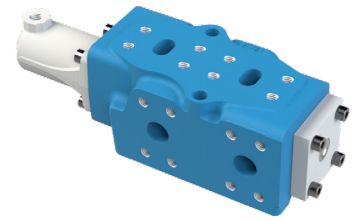
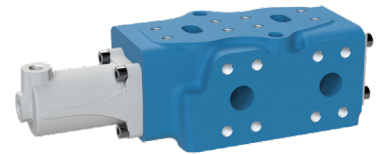
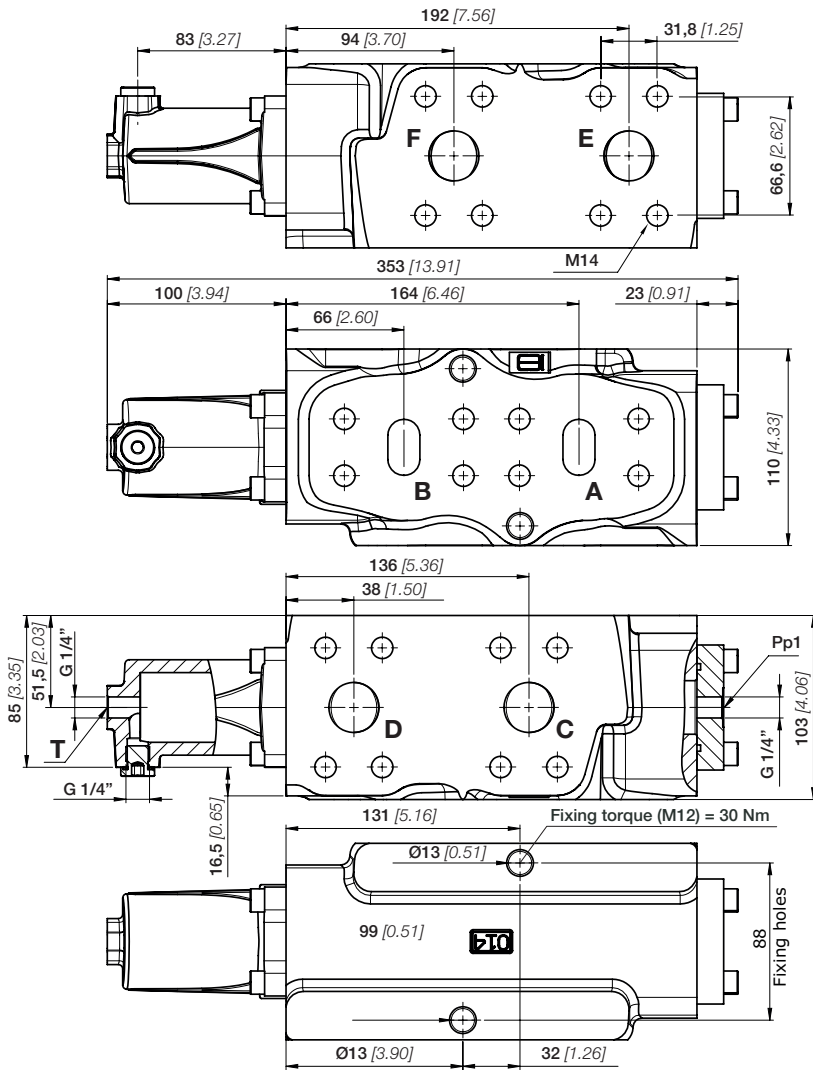
HYDRAULIC SCHEMA - SPOOL OPTION



MONOBLOCK DIVERTERS WITH HYDRAULIC ACTUATION

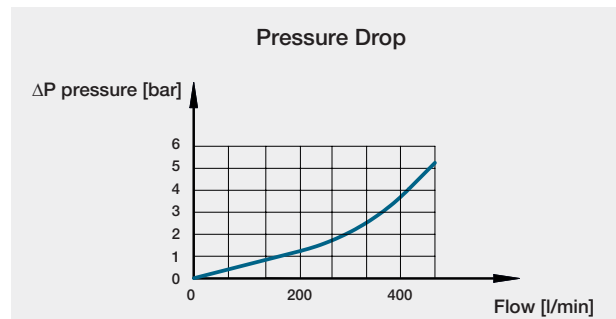
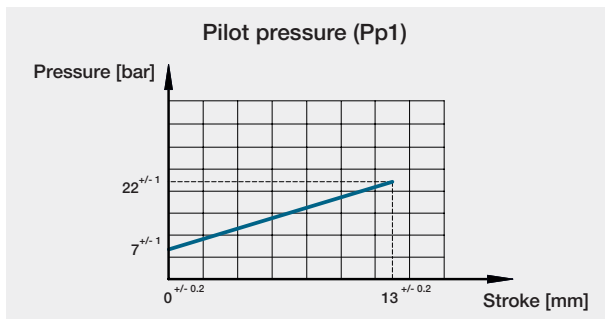
EDM62A

DIMENSIONAL DRAWING



Nr.6 flanges SAE6000
Nr. 24 screw M14X45
Tighten to torque 60 Nm

TYPICAL CURVES



HYDRAULIC SCHEMA - SPOOL OPTION

