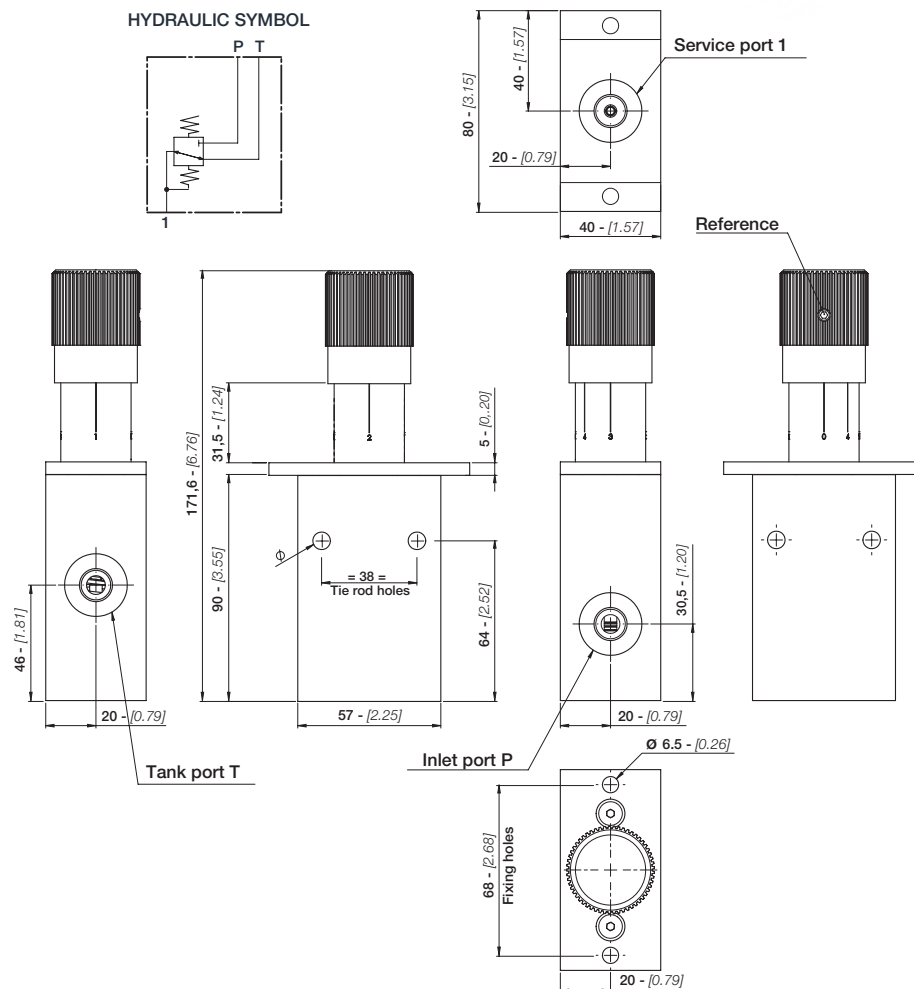
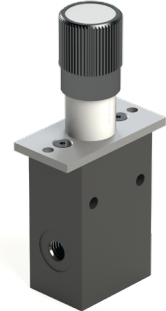


### FUNCTIONS AND BENEFITS

- Compact and light weight.
- Precise pressure control.
- Low operating effort.
- High durability and maintenance free.

### TECHNICAL DATA

Maximum input pressure:  
**100 bar** - [1450 psi]  
 Max backpressure on tank line:  
**3 bar** - [43.5]  
 Control max flow on ports:  
**15 l/min** - [4 GPM]



### DIMENSIONS

The dimensional drawing represents a ESJ01V with standard assembly and BSP connections. You can configure a ESJ01C with wheel operated hydraulic remote control or without control.

TYPE	BSP (ISO 1179-1)	UN-UNF (ISO 11926-1)
INLET - P	G 1/4	9/16" - 18 UNF
SERVICE PORT - 1	G 1/4	9/16" - 18 UNF
OUTLET - T	G 1/4	9/16" - 18 UNF

# ESJ01V

## Hydraulic remote control - Single service port



### TYPICAL CURVES

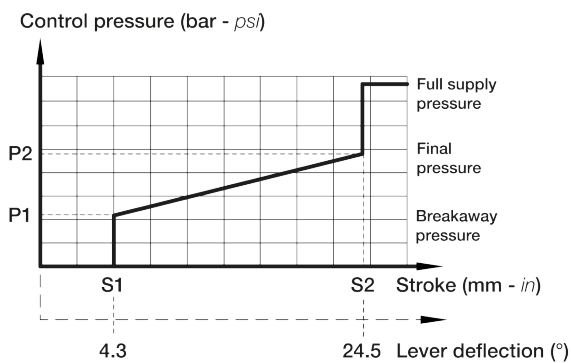
All ESJ01V are equipped with 1 metering curves. The metering curve classification depends on the control pressure (bar - psi) and stroke length (mm - in).

Currently two types of metering curves are available:

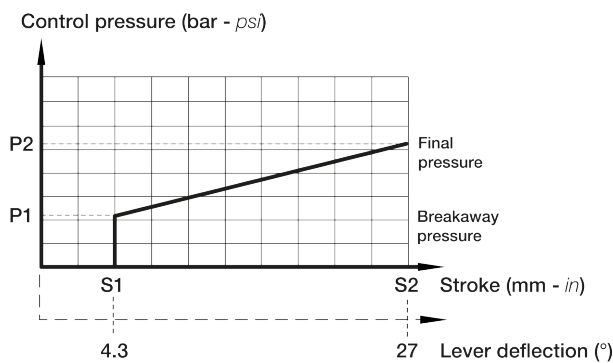
- **Linear curve with step (MV type)**
- **Linear curve without step (MZ type)**

All metering curves are interchangeable.

**MV linear curve with step**



**MZ linear curve without step**



### APPLICATIONS

EBI motion controls servocontrols joysticks are used to control the work and drive hydraulics of modern mobile machines with high accuracy, safety and optimal performance.

**ESJ01C are suited for specialized applications for a variety of mobile equipment such as:**



### OPTIONAL FEATURES

- On request are available broken line metering curves with step and broken line metering curves without step.