

ESJ01B

Single axis pilot control lever
section with 39 mm pitch

DT.ESJ01B.00

FUNCTIONS AND BENEFITS

- Compact and light weight.
- Progressive and sensitive operation.
- Precise pressure control.
- Low operating effort.
- Optimised angular movements of joystick.
- Control element protected with rubber bellow.
- High durability and maintenance free.

TECHNICAL DATA

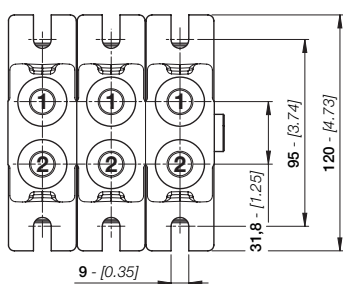
Maximum input pressure:
100 bar - [1450 psi]

Max backpressure on tank line:
3 bar - [43.5]

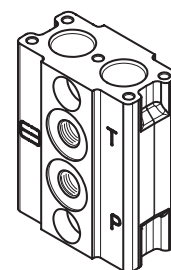
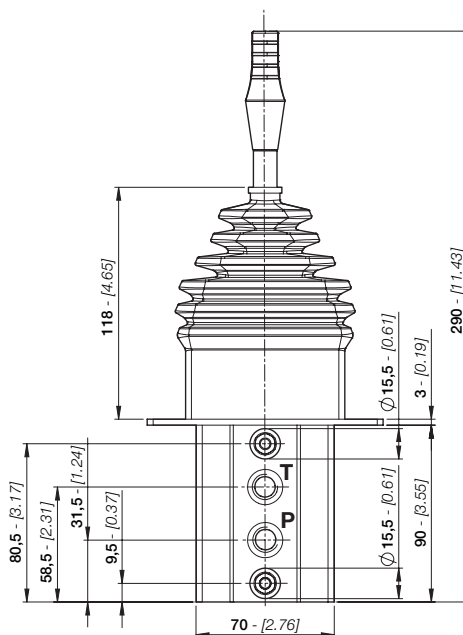
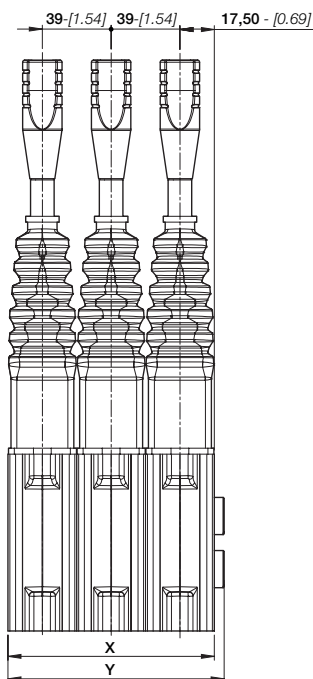
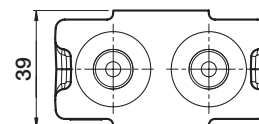
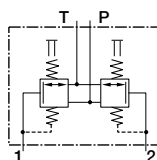
Control max flow on ports:
15 l/min - [4 GPM]



ESJ01B
PITCH = 39 mm



HYDRAULIC SYMBOL
Single function configuration



DIMENSIONS

The dimensional drawing represents a ESJ01B with 3 sections, standard assembly and BSP connections.

You can configure a ESJ01B up to 12 sections.

TYPE	BSP (ISO 1179-1)	UN-UNF (ISO 11926-1)
INLET - P	G 1/4	9/16" - 18 UNF
PORTS - 1/2	G 1/4	9/16" - 18 UNF
OUTLET - T	G 1/4	9/16" - 18 UNF

TYPE	X mm-[in]	Y mm-[in]	WEIGHT kg-[lb]
ESJ01B/1	39 - [1.54]	54 - [1.73]	1,88 - [4.15]
ESJ01B/2	78 - [3.07]	83 - [3.27]	3,76 - [8.30]
ESJ01B/3	117 - [4.61]	122 - [4.81]	5,64 - [12.45]
ESJ01B/4	156 - [6.15]	161 - [6.34]	7,52 - [16.60]
ESJ01B/5	195 - [7.68]	200 - [7.88]	9,40 - [20.75]
ESJ01B/6	234 - [9.22]	239 - [9.42]	11,28 - [24.90]
ESJ01B/7	273 - [10.76]	278 - [10.95]	13,16 - [29.50]
ESJ01B/8	312 - [12.29]	317 - [12.49]	15,04 - [33.20]
ESJ01B/9	351 - [13.83]	356 - [14.03]	16,92 - [37.50]
ESJ01B/10	390 - [15.37]	395 - [15.56]	18,80 - [41.50]
ESJ01B/11	429 - [16.90]	434 - [17.10]	20,68 - [45.65]
ESJ01B/12	468 - [18.44]	473 - [18.64]	22,56 - [49.80]

ESJ01B

Single axis pilot control lever section with 39 mm pitch



TYPICAL CURVES

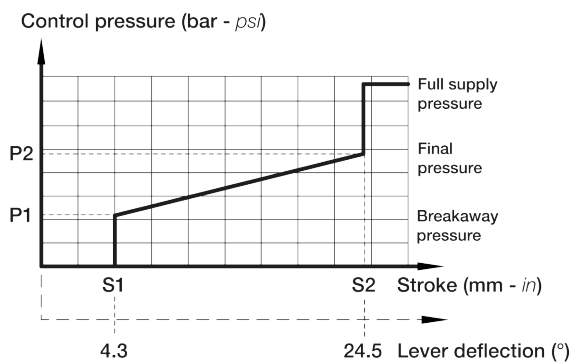
All ESJ01B servocontrols are equipped with 2 metering curves (one metering curve each service port). The metering curve classification depends on the control pressure (bar - psi) and stroke length (mm - in).

Currently two types of metering curves are available:

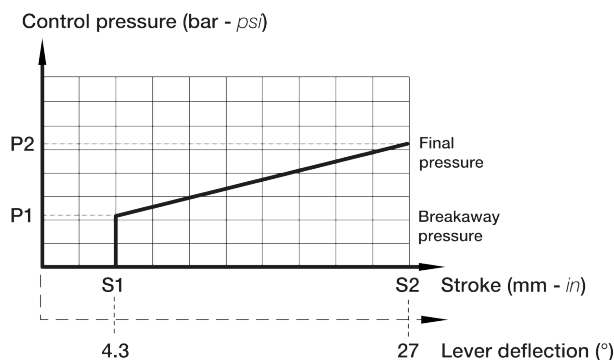
- **Linear curve with step (MV type)**
- **Linear curve without step (MZ type)**

All metering curves are interchangeable.

MV linear curve with step



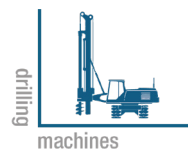
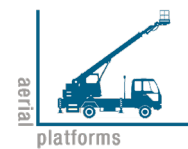
MZ linear curve without step



APPLICATIONS

EBC motion controls servocontrols joysticks are used to control the work and drive hydraulics of modern mobile machines with high accuracy, safety and optimal performance.

ESJ01B are suited for specialized applications for a variety of mobile equipment such as:



OPTIONAL FEATURES

- On request are available broken line metering curves with step and broken line metering curves without step.
- To space the sections and allow the correct control of the handles, it is possible to set up the joystick with an intermediate spacer. It is identified by the code BJA0.

FULLY INTERCHANGEABLE WITH MOST OF COMPETITOR'S JOYSTICKS