



ECM08A

Monoblock directional control valve with auxiliary valves and check valves

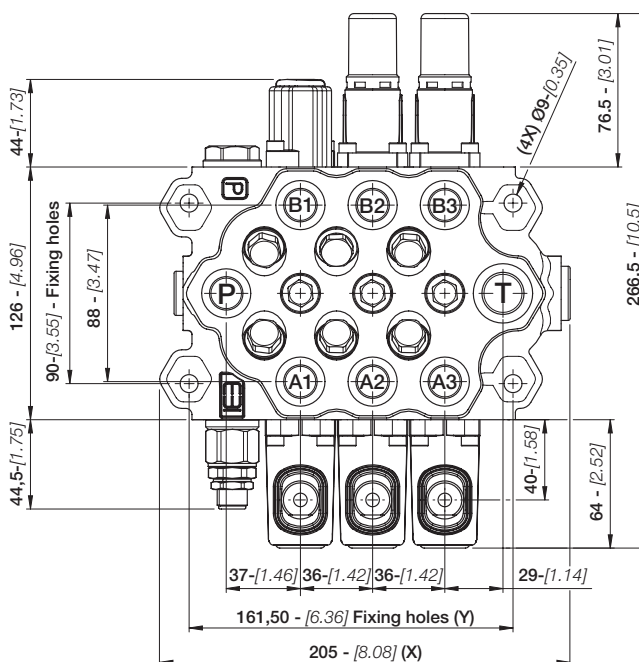
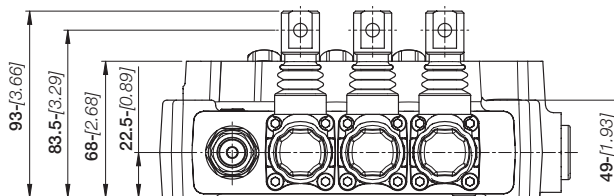
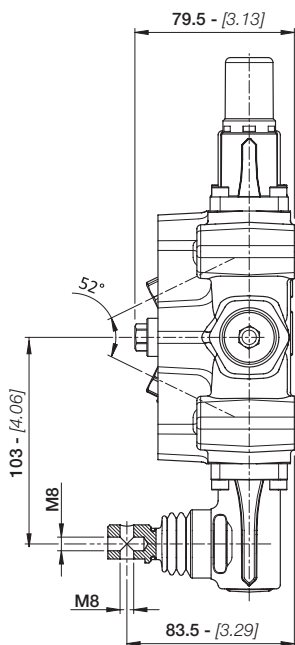
DT.ECM08A.02

FUNCTIONS AND BENEFITS

- Parallel circuit.
- Compact directional valve with low pressure losses.
- Check valves on every spool: good control on multiple actuations.
- Interchangeable spools (same spool fits all the controls and spools are interchangeable with the ECS08A).
- Wide range of auxiliary valves on the ports.
- Dump valve available.
- Availability of manual, pneumatic and hydraulic actuations.

TECHNICAL DATA

Number of sections	2-8
Parallel spool stroke (mm-in)	6 [0.24]
Float spool extra stroke (mm-in)	5 [0.20]
Spool pitch (mm-in)	36 [1.42]
Spool diameter (mm-in)	14 [0.55]
Nominal flow (l/min-GPM)	50 [12]
Operating pressure (bar-psi)	350 [5000]



DIMENSIONS

The dimensional drawing represents a ECM08A/3 with manual actuation and SAE connections.

TYPE	BSP (ISO 1179-1)	UN-UNF (ISO 11926-1)
INLET - P	G 3/8	3/4" - 16 UNF
PORTS - A/B	G 3/8	3/4" - 16 UNF
Hydraulic pilot	G 1/4	9/16" - 18 UNF
Pneumatic pilot	G 1/8	NPTF 1/8-27
OUTLET - T/T1	G 3/8	3/4" - 16 UNF

TYPE	X (mm / in)	Y (mm / in)
ECM08A/2	169 - [6.65]	125.5 - [4.94]
ECM08A/3	205 - [8.07]	161.5 - [6.36]
ECM08A/4	241 - [9.49]	197.5 - [7.77]
ECM08A/5	277 - [10.90]	233.5 - [9.19]
ECM08A/6	313 - [12.32]	269.5 - [10.61]
ECM08A/7	349 - [13.74]	305.5 - [12.03]
ECM08A/8	385 - [15.16]	341.5 - [13.44]



engineering beyond imagination

EBI MOTION CONTROLS S.r.l
 Via Andrea Costa 11/2, 40057
 Cadriano, Fraz. di Granarolo
 dell'Emilia (BO)
 Tel. +39 051.0188.800
 Fax 051.701.093
www.ebimc.com
info@ebimc.com

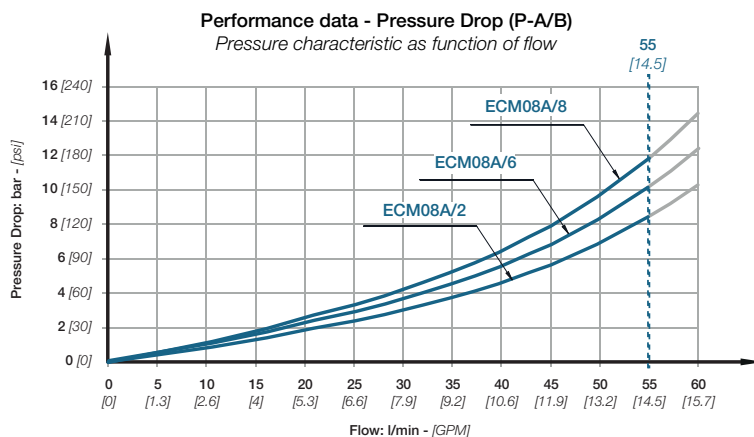
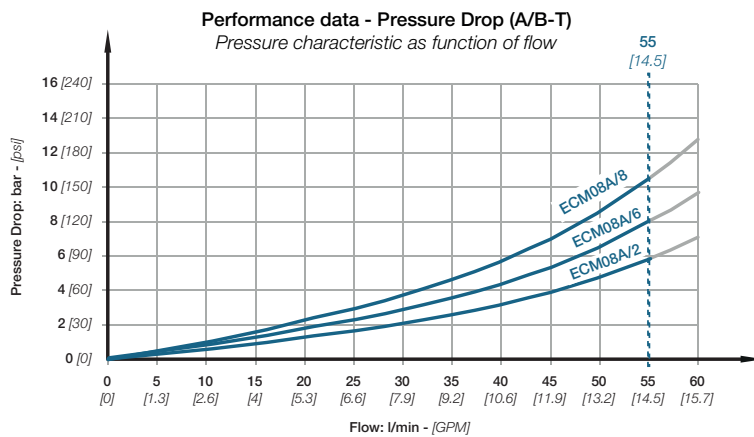
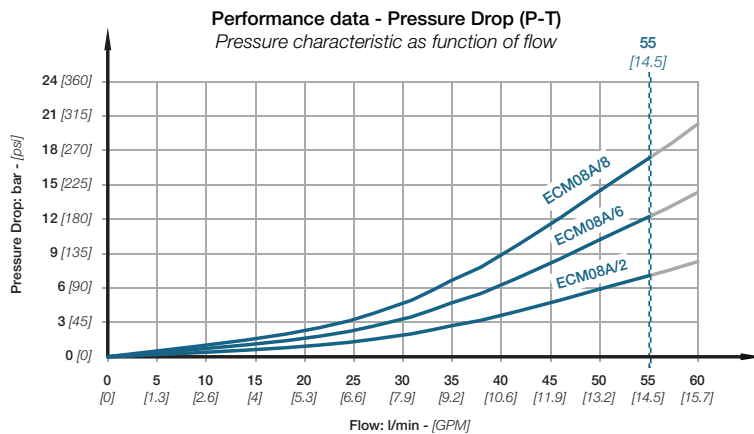
ECM08A

Monoblock directional control valve with auxiliary valves and check valves



TYPICAL CURVES

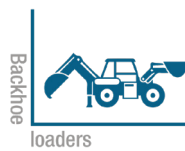
All performances are obtained using mineral based hydraulic oil 46 cSt viscosity at 40°C (ISO VG46 viscosity class). All ECM08A go through functional testing at these conditions before shipment.



APPLICATIONS

EBI motion controls provides a broad choice of monoblock directional control valves expertly developed and tested to meet different market sectors' needs.

ECM08A are suited for specialized applications for a variety of mobile equipment such as:



OPTIONAL FEATURES

- The mechanical joystick control and the double side actuation are available on request.
- On request all ECM08A monoblock control valves by EBI can be delivered painted (RAL 9005 black primer).
- To improve performance and controllability, a full range of hydraulic remote controls (joysticks and foot pedals) is available (see ESJ01A, ESJ02A, ESP02B, ect.)