



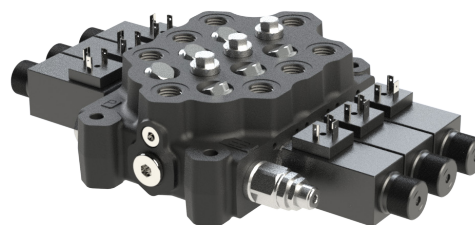
ECM08A

Direct electric control - PUSH PUSH Actuation

DT.001.00

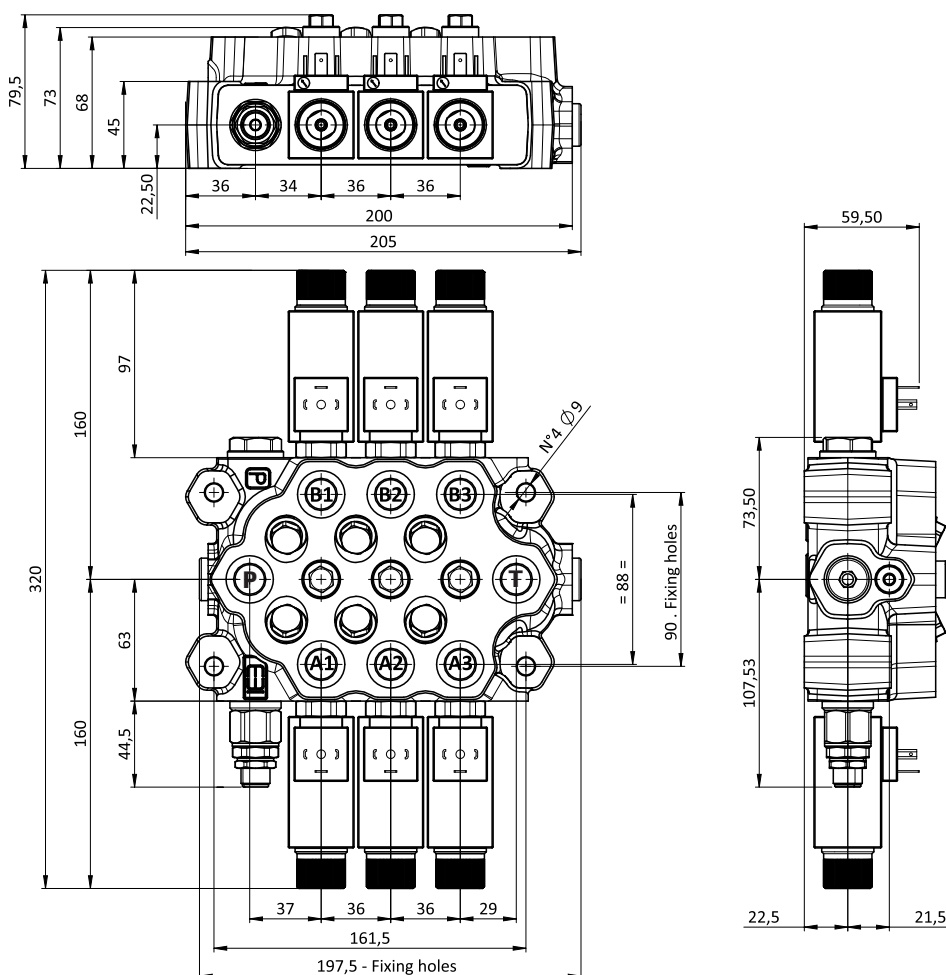
FUNCTIONS AND BENEFITS

The ECM08A is a monoblock control valve, size 08, equipped with spool check valves and port relief valve option. This new monoblock combines the performance and efficiency of the ECS08A, sectional valve, with the compactness and simplicity of the monoblock. The electric control for the ECM08A is equipped with two push-push magnets operating the spool. The valve free flow "Y-Type" configuration, reduces the flow forces and extends the operation range of pressure vs flow of the monoblock.



DIMENSIONAL DRAWING

The dimensional drawing represents a ECM08A/3 with Push-Push actuation, BSP connections.



TECHNICAL SPECIFICATIONS

| | |
|---------------------------|-----------------|
| Rated voltage | 12 VDC - 24 VDC |
| Rated current | 3,33 A - 1,67 A |
| Rated power | 40 W |
| Permitted working voltage | ±10% nominal |
| Max ambient temperature | 40°C |
| Max oil temperature | 80°C |
| Operation time | S1 100% |
| Protection degree | IP65 |
| Insulation degree | H |
| Standard connector | DIN 43650 |
| Spool stroke | 3 + 3 mm |



EBI MOTION CONTROLS
s.r.l. a socio unico
Operational HQ - Legal HQ Via
Andrea Costa, 11/2
40057 Cadriano
Granarolo dell'Emilia (Bo) - Italy
www.ebimc.com

ECM08A

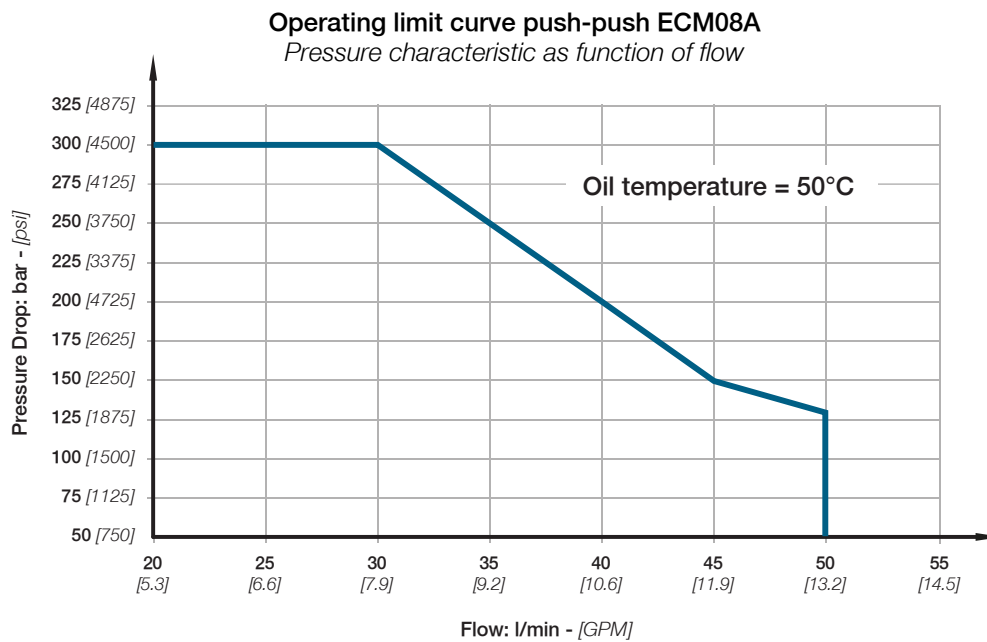
Direct electric control - PUSH PUSH Actuation



OPERATING CURVE

Data detected after amperage decrease equal to 30% of the rated value.

Conditions occurring to coil at stabilization temperature and absorbed voltage decrease equal to 20% of the rated value.



APPLICATIONS

The Push-Push actuation is suitable for all the mobile applications and, in particular, for agriculture machines and gardening machines. This type of actuation is also recommended for earth moving and lifting machinery applications and, in particular, truck mounted crane, forestry cranes and aerial platform stabilizers. It enables the use of remote-control systems.

