



.....  
Diverters

# EDM61A-EDM62A

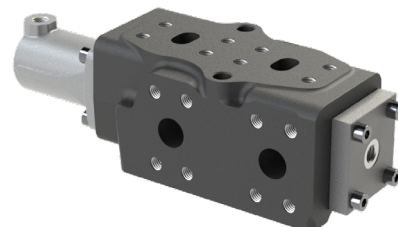
## Monoblock diverters with hydraulic actuation

### Product range

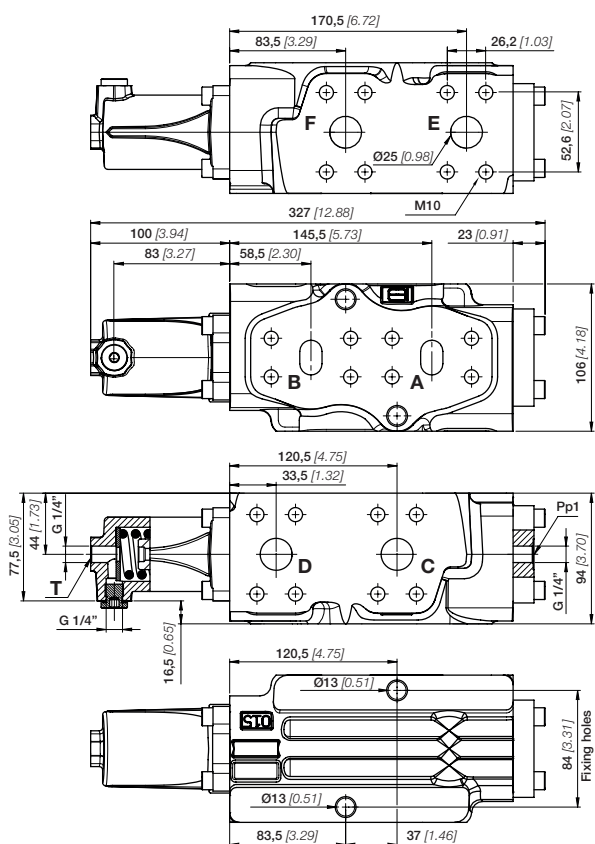
DT.EDM6.00

#### FUNCTIONS AND BENEFITS

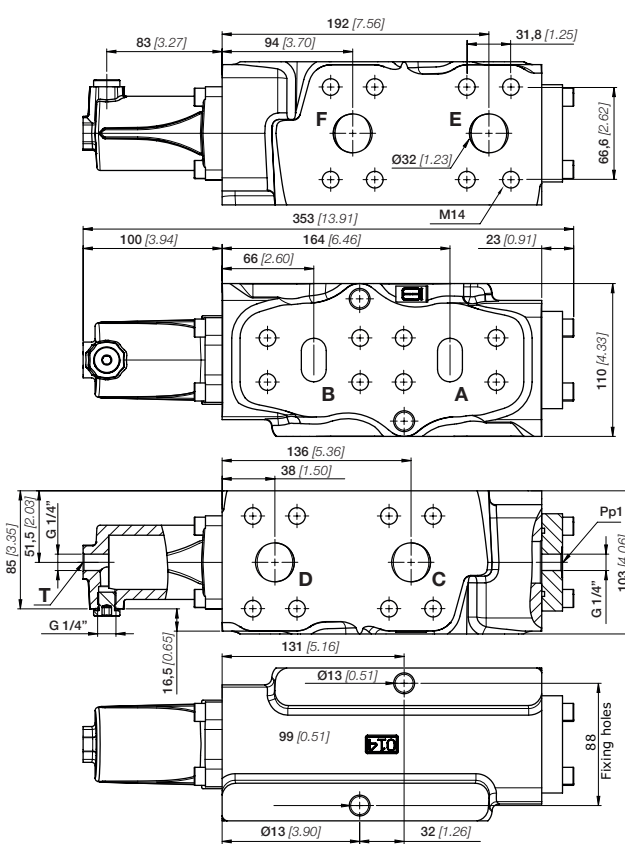
Compact and robust, the EDM61A and EDM62A diverters can double the actuations of a spool control valve and are the best solution for optimizing spaces and systems.



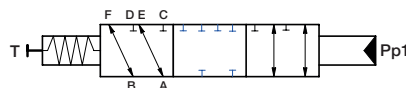
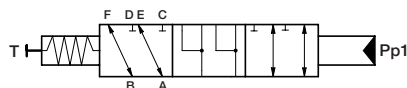
#### DIMENSIONAL DRAWING - EDM61A



#### DIMENSIONAL DRAWING - EDM62A



#### HYDRAULIC SCHEMA - SPOOLS OPTION



#### TECNICAL DATA

Nominal flow (l/min) - [GPM]

EDM61A

300 [80]

EDM62A

400 [105]

Operating pressure (bar) [psi]

420 [6090]

420 [6090]

Operating temperature range (°C)

-25°C / +105°C

-25°C / +105°C

Fluid viscosity range (cSt)

10 - 460

10 - 460

Diverter valve stroke (mm) [in]

13 [0.51]

13 [0.51]

#### DIMENSIONS

Service Port (A - B - C - D - E - F)

SAE3000 ISO 6162/1

SAE6000 ISO 6162/2

Hydraulic port / Tank port (T)

G 1/4"

G 1/4"



EBC MOTION CONTROLS S.r.l

Via Andrea Costa 11/2, 40057

Cadriano, Fraz. di Granarolo

dell'Emilia (BO)

Tel. +39 051.0188.800

Fax 051.701.093

[www.ebimc.com](http://www.ebimc.com)

[info@ebimc.com](mailto:info@ebimc.com)

# EDM61A-EDM62A

## Monoblock diverters with hydraulic actuation

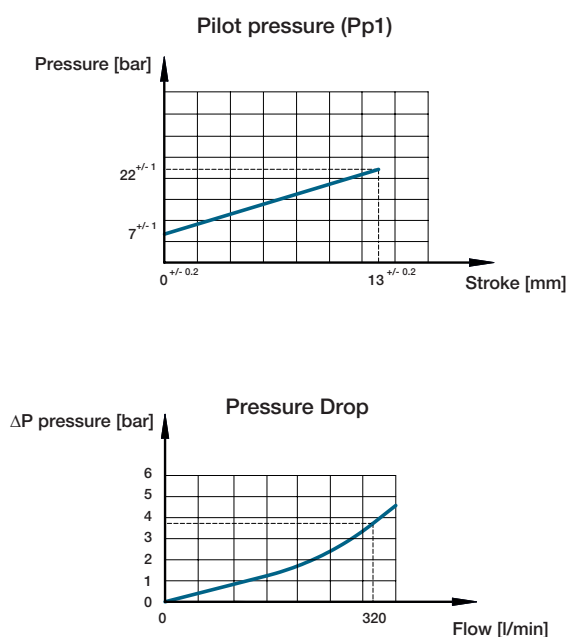
### Product range



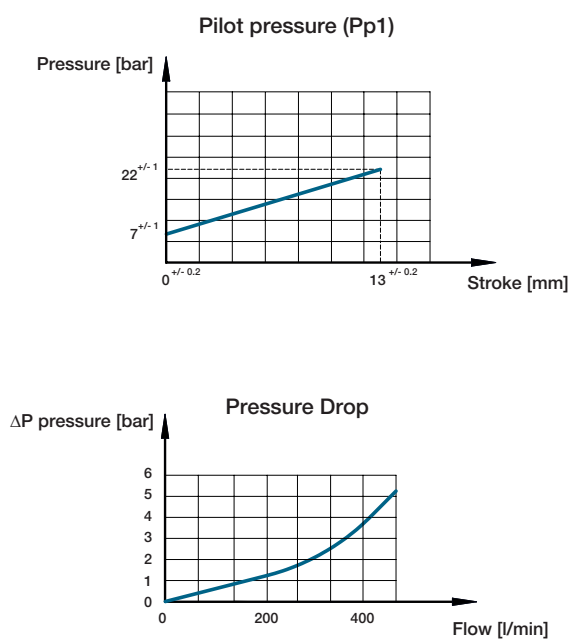
#### TYPICAL CURVES

All information and diagrams refer to a mineral base oil ISO-VG46 at  $40^{\circ} \pm 5^{\circ}\text{C}$  temperature (32 cSt kinematic viscosity).

Diverter EDM61A



Diverter EDM62A



#### APPLICATIONS

EBI diverters are maintenance free and have a long life cycle and are suited for specialized applications for a variety of mobile equipment such as:

