

EDM61A-EDM62A

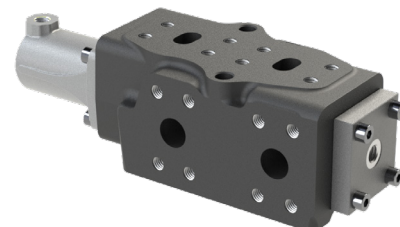
Monoblock diverters with hydraulic actuation

Product range

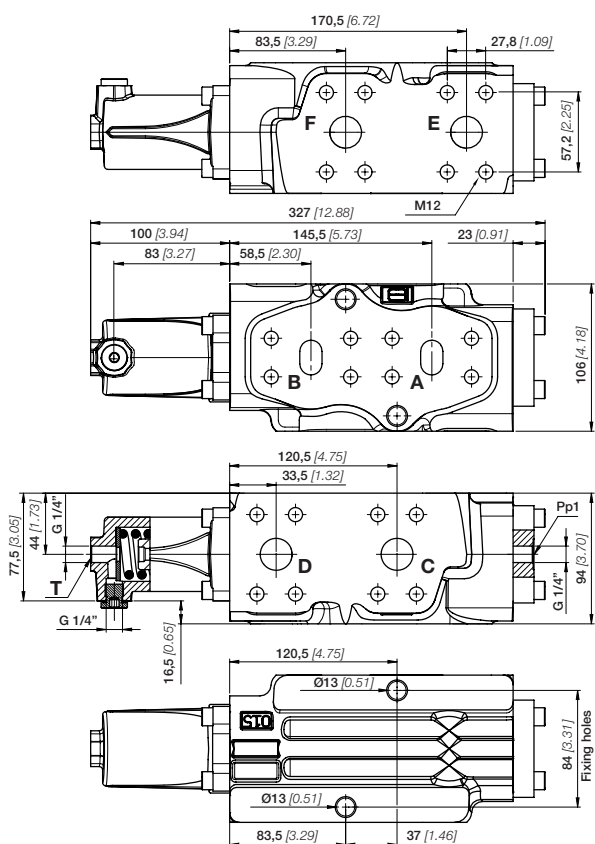
DT.EDM6.01

FUNCTIONS AND BENEFITS

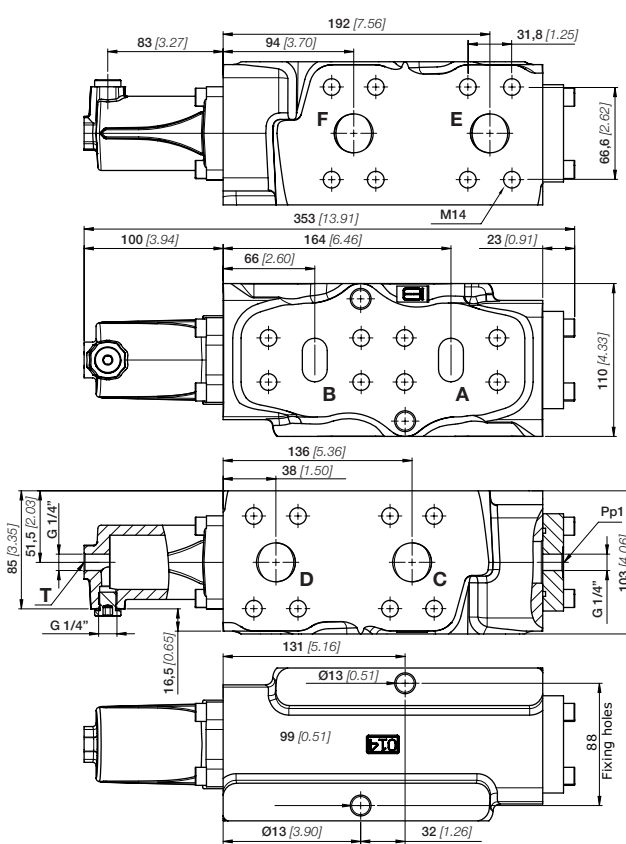
Compact and robust, the EDM61A and EDM62A diverters can double the actuations of a spool control valve and are the best solution for optimizing spaces and systems.



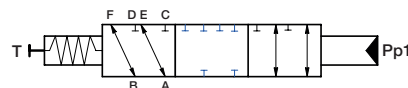
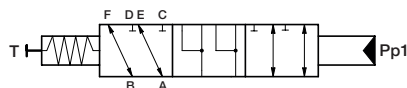
DIMENSIONAL DRAWING - EDM61A



DIMENSIONAL DRAWING - EDM62A



HYDRAULIC SCHEMA - SPOOLS OPTION



TECNICAL DATA	EDM61A	EDM62A
Nominal flow (l/min) - [GPM]	300 [80]	400 [105]
Operating pressure (bar) [psi]	420 [6090]	420 [6090]
Operating temperature range (°C)	-25°C / +105°C	-25°C / +105°C
Fluid viscosity range (cSt)	10 - 460	10 - 460
Diverter valve stroke (mm) [in]	13 [0.51]	13 [0.51]
DIMENSIONS	EDM61A	EDM62A
Service Port (A - B - C - D - E - F)	1" series SAE3000/6000 ISO 6162-1/-2	1 1/4" series SAE3000/6000 ISO 6162-1/-2
Hydraulic port / Tank port (T)	G 1/4"	G 1/4"

EDM61A-EDM62A

Monoblock diverters with hydraulic actuation

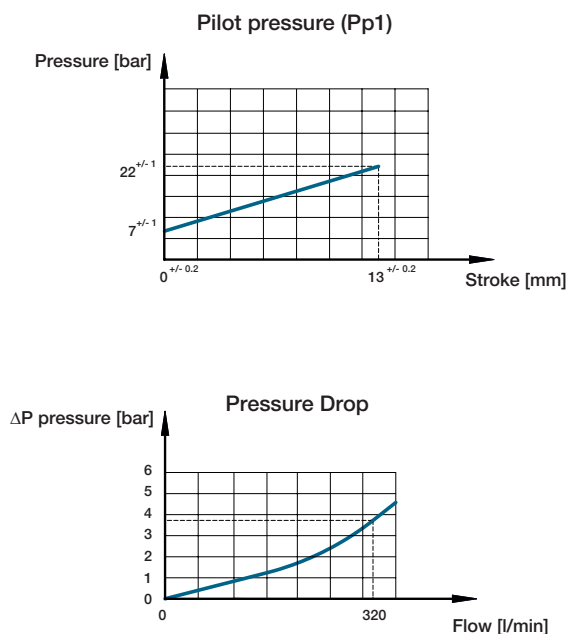
Product range



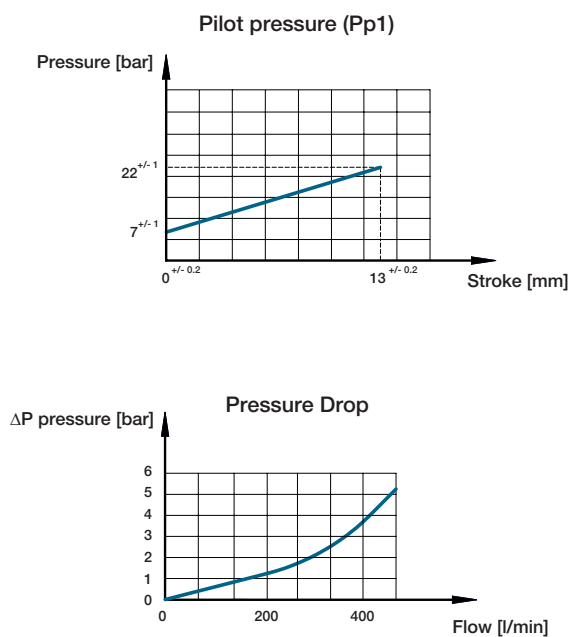
TYPICAL CURVES

All information and diagrams refer to a mineral base oil ISO-VG46 at $40^{\circ} \pm 5^{\circ}\text{C}$ temperature (32 cSt kinematic viscosity).

Diverter EDM61A



Diverter EDM62A



APPLICATIONS

EBI diverters are maintenance free and have a long life cycle and are suited for specialized applications for a variety of mobile equipment such as:

