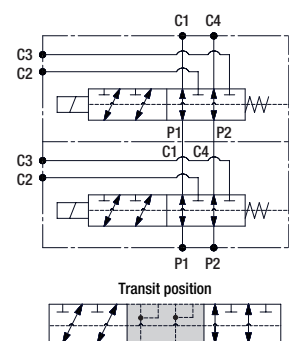
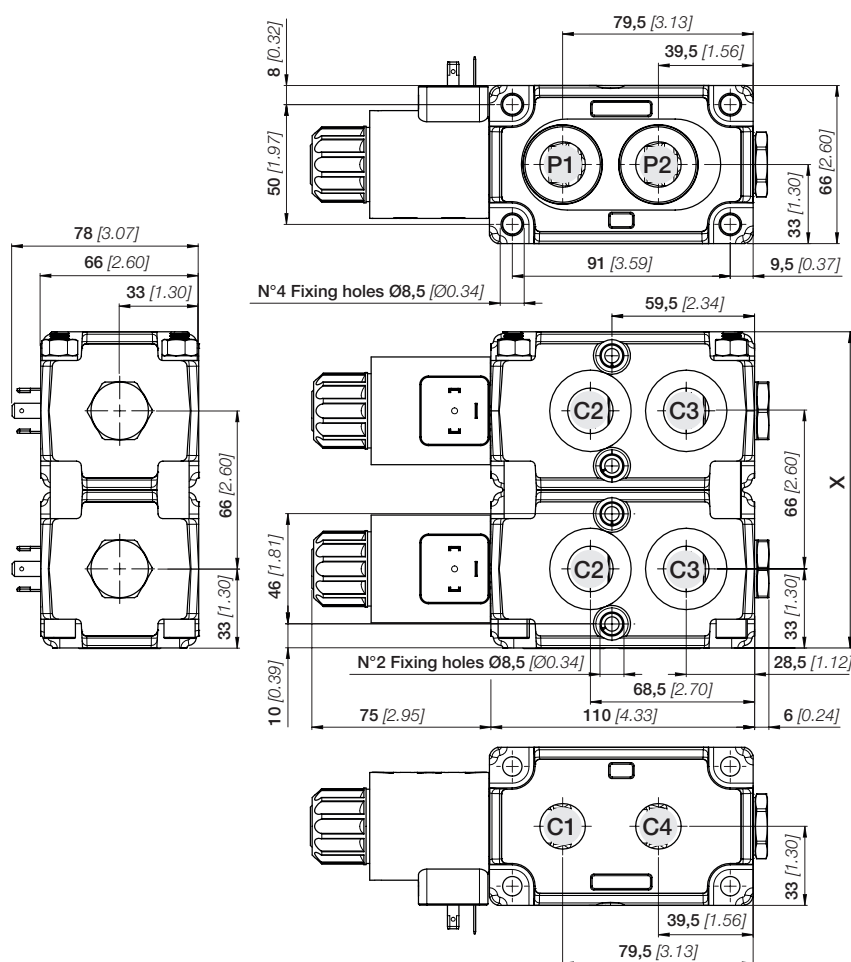


FUNCTIONS AND BENEFITS STACKABLE DIVERTER - EDS

- Usable as multiple stackable units.
- Directional spool valve with direct solenoid control.
- Coils with different connectors and voltage are available.
- Compact design and easy mounting.
- Integrated threaded ports.



The drawing represents a EDS08A/2 with DIN 43650 ISO 4400 Solenoid kit, internal drain circuit.



DIMENSIONS EDS08A

Inlet port (P1 - P2)	G 3/8
Service port (C1 - C4)	3/4"-16 UNF G 3/8 JIS B 2351
Service port (C2 - C3)	
Drain port (D)	G 1/4 7/16"-20 UNF

DIMENSIONS EDS10A

Inlet port (P1 - P2)	G 1/2
Service port (C1 - C4)	7/8"-14 UNF G 1/2 JIS B 2351
Service port (C2 - C3)	
Drain port (D)	G 1/4 7/16"-20 UNF

TECNICAL DATA	EDS08A	EDS10A
Number of sections	2 / 3 / 4	2 / 3 / 4
Nominal flow (l/min) - [GPM]	50 [14]	100 [28]
Internal leakage A(B) → T (cm ³ /min) Δp = 100 bar / T = 40° C	min. 10 [0.61] max. 20 [1.22]	
Operating pressure (bar) [psi]	250 [3625]	250 [3625]
Operating pressure by using external drain (bar) [psi]	310 [4500]	310 [4500]
Diverter valve stroke (mm) [in]	3,2 [0.13]	3,2 [0.13]

TYPE	(X) mm [in]	WEIGHT kg [lb]
EDS08A/2	132 [5.20]	6,8 [15]
EDS08A/3	198 [7.80]	10,3 [22.7]
EDS08A/4	264 [10.40]	13,7 [29.5]
EDS10A/2	132 [5.20]	6,8 [15]
EDS10A/3	198 [7.80]	10,3 [22.7]
EDS10A/4	264 [10.40]	13,7 [29.5]



EDS

Stackable diverters

Product range

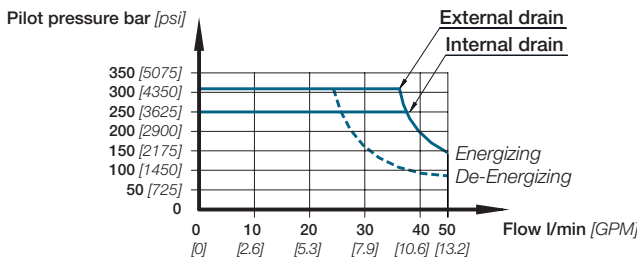


TYPICAL CURVES

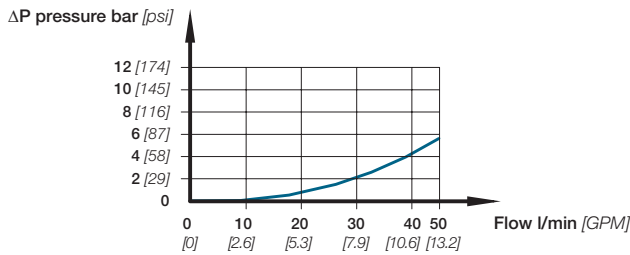
All information and diagrams refer to a mineral base oil ISO-VG46 at $40^{\circ} \pm 5^{\circ}\text{C}$ temperature (32 cSt kinematic viscosity).

Diverter EDS08A

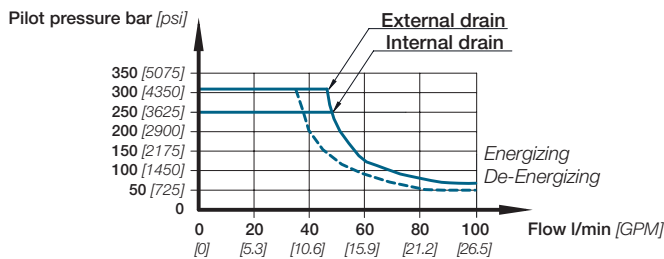
Performance Data
Pressure characteristic as function of flow



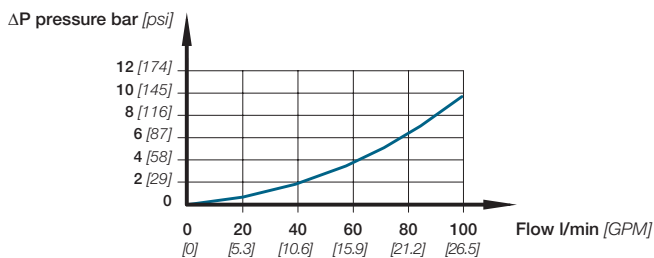
Pressure Drop



Performance Data
Pressure characteristic as function of flow



Pressure Drop



Diverter EDS10A

APPLICATIONS

EBI motion controls diverter valves are used to pilot remote of directional control valves, auxiliary valves, variable displacement pumps and motors, frictions and hydraulic brakes, all with high accuracy, safety and optimal performance.

EBI diverters are maintenance free and have a long life cycle and are suited for specialized applications for a variety of mobile equipment such as:

