



.....
Diverters

EDS

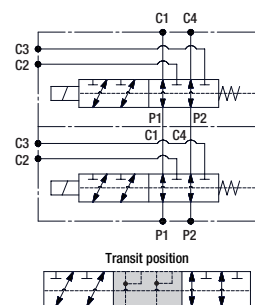
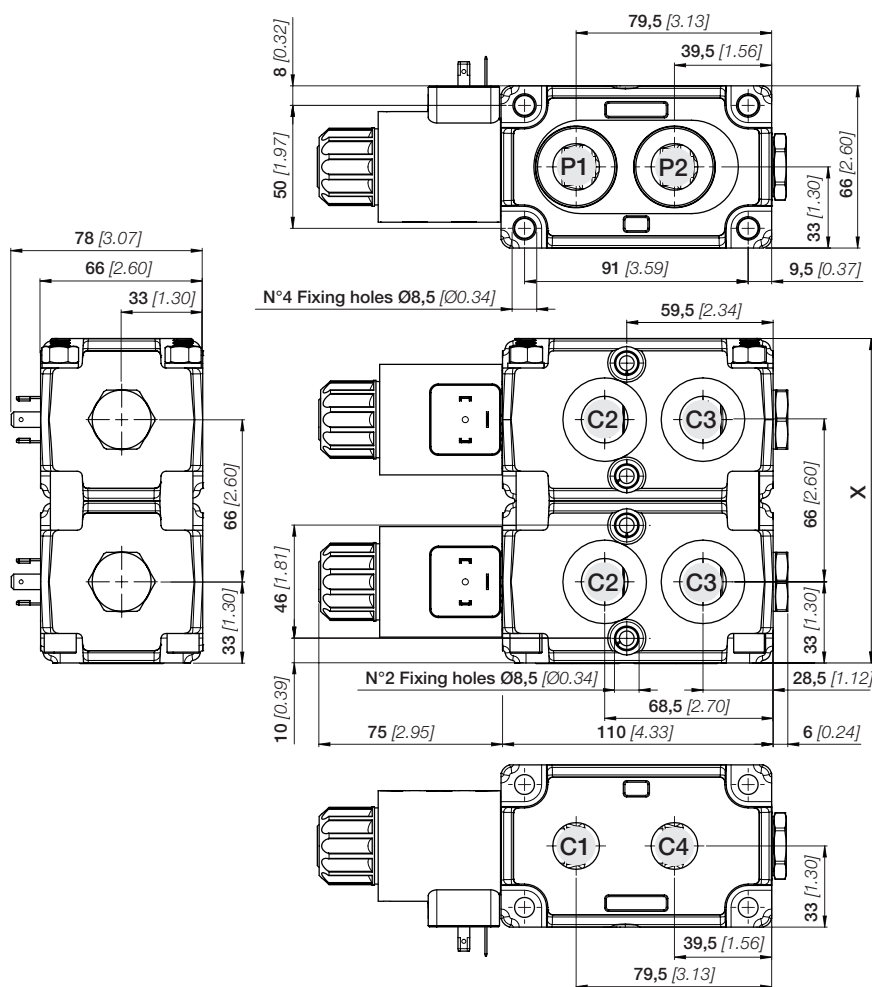
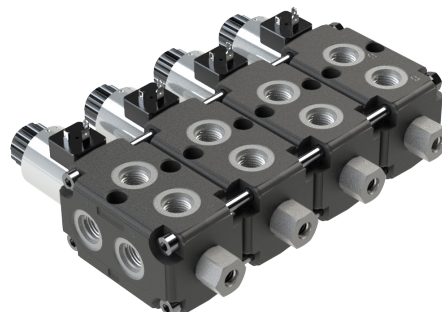
Stackable diverters

Product range

DT.EDS.02

FUNCTIONS AND BENEFITS STACKABLE DIVERTER - EDS

- Usable as multiple stackable units.
- Directional spool valve with direct solenoid control.
- Coils with different connectors and voltage are available.
- Compact design and easy mounting.
- Integrated threaded ports.



DIMENSIONS EDS08A

Inlet port (P1 - P2)	G 3/8
Service port (C1 - C4)	3/4"-16 UNF G 3/8 JIS B 2351
Service port (C2 - C3)	G 3/8 JIS B 2351
Drain port (D)	G 1/4 7/16"-20 UNF

DIMENSIONS EDS10A

Inlet port (P1 - P2)	G 1/2
Service port (C1 - C4)	7/8"-14 UNF G 1/2 JIS B 2351
Service port (C2 - C3)	G 1/2 JIS B 2351
Drain port (D)	G 1/4 7/16"-20 UNF

The drawing represents a EDS08A/2 with DIN 43650 ISO 4400 Solenoid kit, internal drain circuit.

TECNICAL DATA	EDS08A	EDS10A
Number of sections	2 / 3 / 4	2 / 3 / 4
Nominal flow (l/min) - [GPM]	50 [14]	100 [28]
Internal leakage A(B) → T (cm ³ /min) Δp = 100 bar / T = 40° C	min. 10 [0.61] max. 20 [1.22]	
Operating pressure (bar) [psi]	250 [3625]	250 [3625]
Operating pressure by using external drain (bar) [psi]	310 [4500]	310 [4500]
Diverter valve stroke (mm) [in]	3,2 [0.13]	3,2 [0.13]

TYPE	(X) mm [in]	WEIGHT kg [lb]
EDS08A/2	132 [5.20]	6,8 [15]
EDS08A/3	198 [7.80]	10,3 [22.7]
EDS08A/4	264 [10.40]	13,7 [29.5]
EDS10A/2	132 [5.20]	6,8 [15]
EDS10A/3	198 [7.80]	10,3 [22.7]
EDS10A/4	264 [10.40]	13,7 [29.5]



EBI MOTION CONTROLS S.r.l
Via Andrea Costa 11/2, 40057
Cadriano, Fraz. di Granarolo
dell'Emilia (BO)
Tel. +39 051.0188.800
Fax 051.701.093
www.ebimc.com
info@ebimc.com

EDS

Stackable diverters

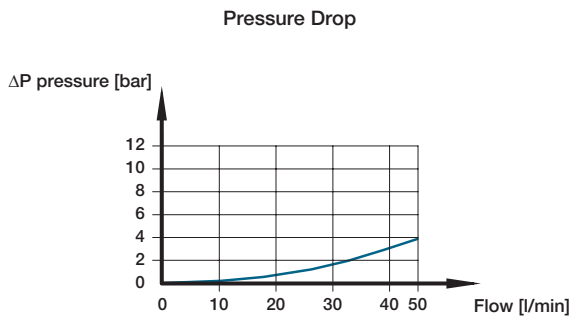
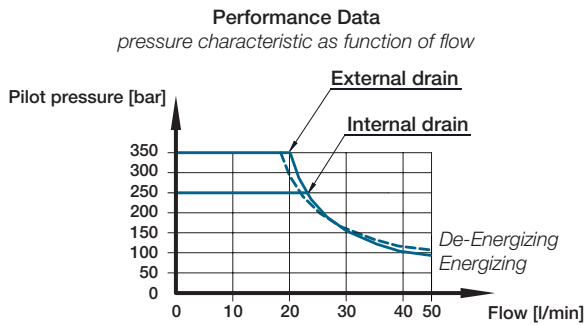
Product range



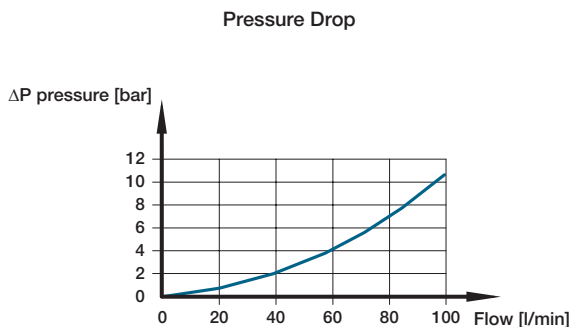
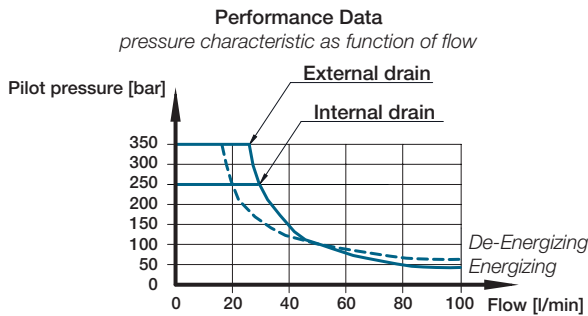
TYPICAL CURVES

All information and diagrams refer to a mineral base oil ISO-VG46 at $40^{\circ} \pm 5^{\circ}\text{C}$ temperature (32 cSt kinematic viscosity).

Diverter EDS08A



Diverter EDS10A



APPLICATIONS

EBI motion controls diverter valves are used to pilot remote of directional control valves, auxiliary valves, variable displacement pumps and motors, frictions and hydraulic brakes, all with high accuracy, safety and optimal performance.

EBI diverters are maintenance free and have a long life cycle and are suited for specialized applications for a variety of mobile equipment such as:

