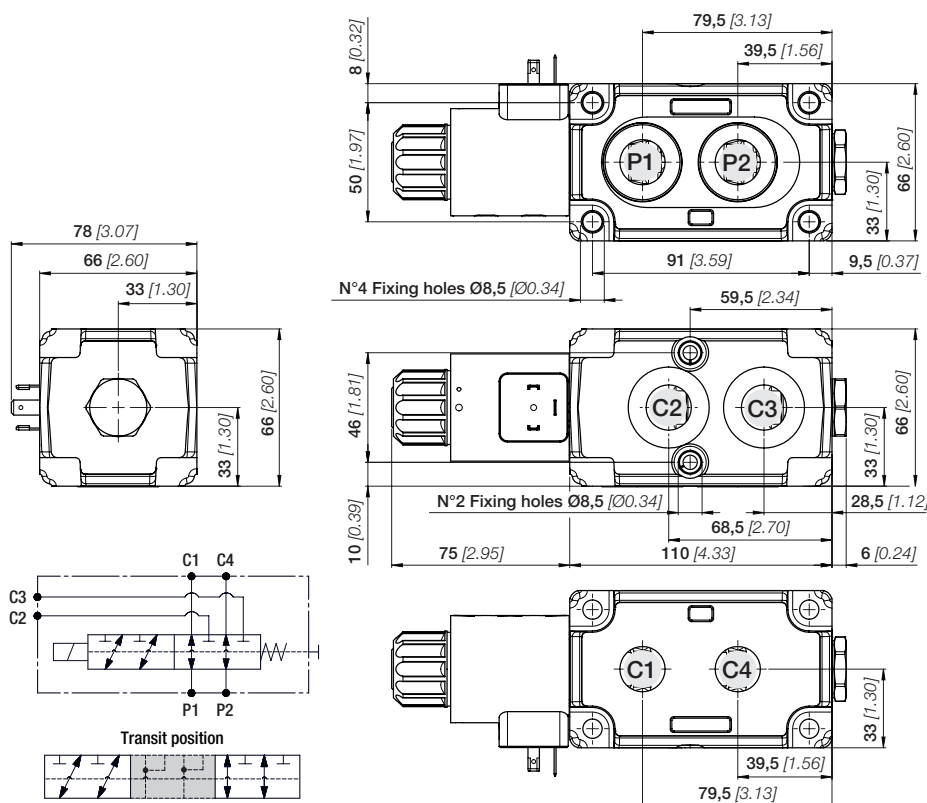


FUNCTIONS AND BENEFITS MONOBLOCK DIVERTER - EDM

- Usable as stand-alone.
- Directional spool valve with direct solenoid control.
- Coils with different connectors and voltage are available.
- Compact design and easy mounting.
- Integrated threaded ports.



The dimensional drawing represents a EDM08A with DIN 43650 ISO 4400 Solenoid kit and internal drain circuit.



DIMENSIONS EDM08A

Inlet port (P1 - P2)	G 3/8
Service port (C1 - C4)	3/4"-16 UNF G 3/8 JIS B 2351
Service port (C2 - C3)	
Drain port (D)	G 1/4 7/16"-20 UNF

DIMENSIONS EDM10A

Inlet port (P1 - P2)	G 1/2
Service port (C1 - C4)	7/8"-14 UNF G 1/2 JIS B 2351
Service port (C2 - C3)	
Drain port (D)	G 1/4 7/16"-20 UNF

TECNICAL DATA

	EDM08A	EDM10A
Number of sections	1	1
Nominal flow (l/min) - [GPM]	50 [14]	100 [28]
Internal leakage A(B) → T (cm ³ /min) Δp = 100 bar / T = 40° C	min. 10 [0.61] - max. 20 [1.22]	
Operating pressure (bar) [psi]	250 [3625]	250 [3625]
Operating pressure by using external drain (bar) [psi]	310 [4500]	310 [4500]
Diverter valve stroke (mm) [in]	3,2 [0.13]	3,2 [0.13]

EDM

Monoblock diverters

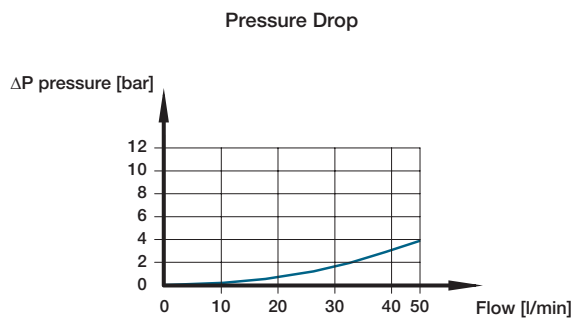
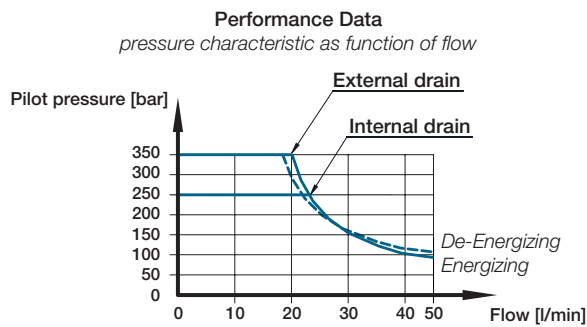
Product range



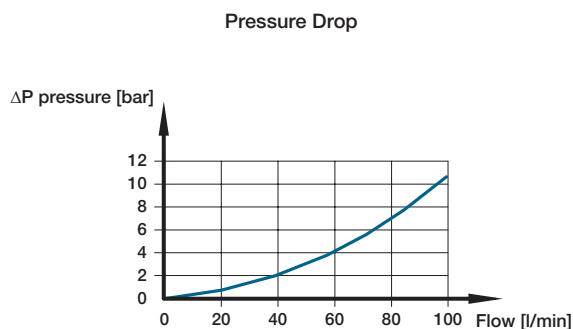
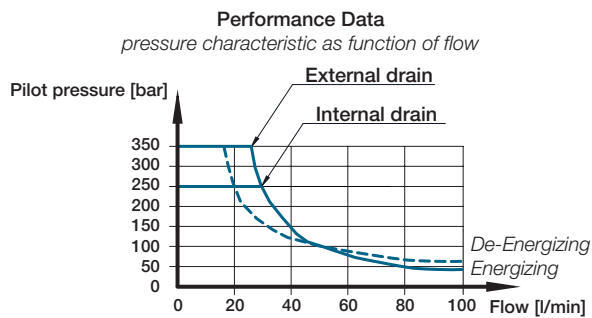
TYPICAL CURVES

All information and diagrams refer to a mineral base oil ISO-VG46 at $40^{\circ} \pm 5^{\circ}\text{C}$ temperature (32 cSt kinematic viscosity).

Diverter EDM08A



Diverter EDM10A



APPLICATIONS

EBI motion controls diverter valves are used to pilot remote of directional control valves, auxiliary valves, variable displacement pumps and motors, frictions and hydraulic brakes, all with high accuracy, safety and optimal performance.

EBI diverters are maintenance free and have a long life cycle and are suited for specialized applications for a variety of mobile equipment such as:

